

# VOORUITZICHT RAPSIE

JH15100

Lot. 1

JH VAN BILJON, POSBUS 17 VERGELEE 8622 TEL:27833799307

SIMMENTALER

Birth Date: 2015/10/22      Simdex: 95      Star:      Reg. Status: REG      FEMALE/VROULIK  
 Age: 46 months      Days Open: 82      Inspection Date: 2017/04/17  
 Herdbook: SP      Calvings: 2      Reg. No: 102886009  
 Horn: Horned      Calving dates: 17/11/16 19/06/21



August 2019 South African Simmentaler GROUP BREEDPLAN

Simmentaler SA - [www.simmentaler.org](http://www.simmentaler.org) / [info@simmentaler.org](mailto:info@simmentaler.org) / 051 446 0580/2

2019	CED	CEM	BW	200	400	600	MCW	MILK	SC	DC	EMA	IMF%	RBY%	SFL	SGF	TS
EBV	-1.6	-2.2	+1.5	+14	+19	+25	+26	+3	--	--	--	--	--	+23	+61	+85
ACC	36%	28%	70%	45%	42%	45%	45%	34%								
BREED	+0.8	+1.0	+1.4	+17	+27	+33	+34	+5	+0.3	-0.5	+0.3	+0.1	+0.2	+56	+110	+138



**Seller's remarks / Verkoper se kommentaar:**

TOP POCKETMONEY DOGTER MET BULKALF VAN BRONCO

R \_\_\_\_\_

# ERICO E15148

E15148

Lot. 2

EE SCHULENBURG, POSBUS 456 COLIGNY 2725 TEL:27833880518

SIMMENTALER

Birth Date: 2015/09/22      Simdex: 100      Star:      Reg. Status: REG      FEMALE/VROULIK  
 Age: 47 months      Days Open: 174      Inspection Date: 2017/11/23  
 Herdbook: SP      Calvings: 2      Reg. No: 102861895  
 Horn: Horned      Calving dates: 18/04/17 19/03/21



August 2019 South African Simmentaler GROUP BREEDPLAN

Simmentaler SA - [www.simmentaler.org](http://www.simmentaler.org) / [info@simmentaler.org](mailto:info@simmentaler.org) / 051 446 0580/2

2019	CED	CEM	BW	200	400	600	MCW	MILK	SC	DC	EMA	IMF%	RBY%	SFL	SGF	TS
EBV	-3.1	+0.0	+2.1	+14	+22	+27	+27	+2	--	--	--	--	--	+29	+66	+93
ACC	34%	32%	39%	60%	53%	52%	48%	45%								
BREED	+0.8	+1.0	+1.4	+17	+27	+33	+34	+5	+0.3	-0.5	+0.3	+0.1	+0.2	+56	+110	+138



**Seller's remarks / Verkoper se kommentaar:**

3 IN 1. MET BULKALF E1951 VAN E15133. 4 MAANDE DRAGTIG VAN E1457.

R \_\_\_\_\_

# MLOPO ESNA 5DE

DCP1561

Lot. 3

JH VAN BILJON, POSBUS 17 VERGELEE 8622 TEL:27833799307

SIMMENTALER

Birth Date: 2015/06/20      Simdex: 91      Star:      Reg. Status: REG      FEMALE/VROULIK  
 Age: 50 months      Days Open: 150      Inspection Date: 2017/03/06  
 Herdbook: SP      Calvings: 2      Reg. No: 102844503  
 Horn: Polled      Calving dates: 17/12/18 19/04/14



August 2019 South African Simmentaler GROUP BREEDPLAN

Simmentaler SA - [www.simmentaler.org](http://www.simmentaler.org) / [info@simmentaler.org](mailto:info@simmentaler.org) / 051 446 0580/2

2019	CED	CEM	BW	200	400	600	MCW	MILK	SC	DC	EMA	IMF%	RBY%	SFL	SGF	TS
EBV	-1.6	-0.7	+2.6	+20	+31	+40	+46	+6	+0.1	--	--	--	--	+30	+90	+138
ACC	44%	37%	73%	66%	67%	69%	64%	48%	40%							
BREED	+0.8	+1.0	+1.4	+17	+27	+33	+34	+5	+0.3	-0.5	+0.3	+0.1	+0.2	+56	+110	+138



**Seller's remarks / Verkoper se kommentaar:**

3 IN 1 POENA KOEI MET BELOWENDE BULKALF JH1924 VAN BATIESTA

R \_\_\_\_\_

**ERICO E13101****E13101****Lot. 4**

EE SCHULENBURG, POSBUS 456 COLIGNY 2725 TEL:27833880518

**SIMMENTALER**

Birth Date: 2013/09/03

Simdex: 99

Star:

Reg. Status: REG

FEMALE/VROULIK

Age: 72 months

Days Open: 174

Inspection Date: 2015/09/28

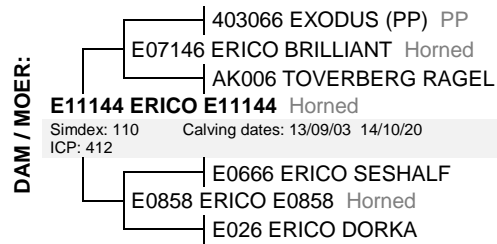
Herdbook: SP

Calvings: 4

Reg. No: 102853694

Horn: Horned

Calving dates: 16/02/19 17/03/01 18/02/27 19/03/21



August 2019 South African Simmentaler GROUP BREEDPLAN

Simmentaler SA - www.simmentaler.org / info@simmentaler.org / 051 446 0580/2

2019	CED	CEM	BW	200	400	600	MCW	MILK	SC	DC	EMA	IMF%	RBY%	SFL	SGF	TS
EBV	+0.5	-0.7	+1.5	+12	+20	+27	+29	+5	--	--	--	--	--	+43	+88	+112
ACC	35%	31%	46%	56%	51%	50%	46%	51%								
BREED	+0.8	+1.0	+1.4	+17	+27	+33	+34	+5	+0.3	-0.5	+0.3	+0.1	+0.2	+56	+110	+138

**Seller's remarks / Verkoper se kommentaar:**

3 IN 1. POENA KOEI MET POENA BULKALF E1949 VAN E15133. 5 MAANDE DRAGTIG VAN E1457.

**R****MLOPO NINA 2DE****DCP1458****Lot. 5**

JH VAN BILJON, POSBUS 17 VERGEELE 8622 TEL:27833799307

**SIMMENTALER**

Birth Date: 2014/09/23

Simdex: 99

Star:

Reg. Status: REG

FEMALE/VROULIK

Age: 59 months

Days Open: 158

Inspection Date: 2016/12/14

Herdbook: SP

Calvings: 3

Reg. No: 102763745

Horn: Polled

Calving dates: 17/06/07 18/05/05 19/04/06



August 2019 South African Simmentaler GROUP BREEDPLAN

Simmentaler SA - www.simmentaler.org / info@simmentaler.org / 051 446 0580/2

2019	CED	CEM	BW	200	400	600	MCW	MILK	SC	DC	EMA	IMF%	RBY%	SFL	SGF	TS
EBV	+0.7	+0.7	+1.7	+16	+27	+32	+35	+5	+0.2	--	--	--	--	+48	+100	+133
ACC	45%	37%	68%	65%	62%	63%	60%	51%	38%							
BREED	+0.8	+1.0	+1.4	+17	+27	+33	+34	+5	+0.3	-0.5	+0.3	+0.1	+0.2	+56	+110	+138

**Seller's remarks / Verkoper se kommentaar:**

POENA KOEI MET MOOI BULKALF JH1920 VAN BATIESTA

**R****ERICO E16152****E16152****Lot. 6**

EE SCHULENBURG, POSBUS 456 COLIGNY 2725 TEL:27833880518

**SIMMENTALER**

Birth Date: 2016/08/20

Simdex: 99

Star:

Reg. Status: REG

FEMALE/VROULIK

Age: 36 months

Days Open: 191

Inspection Date: 2018/10/11

Herdbook: SP

Calvings: 1

Reg. No: 102989332

Horn: Horned

Calving dates: 19/03/04



August 2019 South African Simmentaler GROUP BREEDPLAN

Simmentaler SA - www.simmentaler.org / info@simmentaler.org / 051 446 0580/2

2019	CED	CEM	BW	200	400	600	MCW	MILK	SC	DC	EMA	IMF%	RBY%	SFL	SGF	TS
EBV	+0.5	-0.5	+2.6	+17	+28	+37	+46	+3	-0.2	--	--	--	--	+22	+77	+134
ACC	40%	37%	48%	60%	55%	54%	51%	44%	31%							
BREED	+0.8	+1.0	+1.4	+17	+27	+33	+34	+5	+0.3	-0.5	+0.3	+0.1	+0.2	+56	+110	+138

**Seller's remarks / Verkoper se kommentaar:**

3 IN 1. POENA KOEI MET POENA VERSKALF E1911 VAN RUAN. 3 MAANDE DRAGTIG VAN E1457.

**R**

# VOORUITZICHT RUAN

JH1651

Lot. 7

JH VAN BILJON, POSBUS 17 VERGELEE 8622 TEL:27833799307

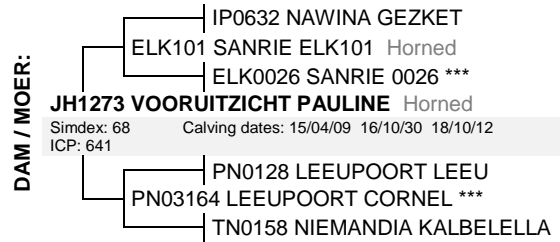
SIMMENTALER

Birth Date: 2016/10/30 DNA: 452036 u, SV  
Age: 34 months  
Herdbook: SP  
Horn: Horned

Reg. Status: REG  
Inspection Date: 2018/08/02

MALE/MANLIK

Reg. No: 103010518



August 2019 South African Simmentaler GROUP BREEDPLAN

Simmentaler SA - www.simmentaler.org / info@simmentaler.org / 051 446 0580/2

2019	CED	CEM	BW	200	400	600	MCW	MILK	SC	DC	EMA	IMF%	RBY%	SFL	SGF	TS
EBV	+4.6	+3.4	+1.3	+16	+26	+31	+25	+5	--	--	--	--	--	+68	+109	+137
ACC	40%	29%	70%	53%	50%	51%	50%	35%								
BREED	+0.8	+1.0	+1.4	+17	+27	+33	+34	+5	+0.3	-0.5	+0.3	+0.1	+0.2	+56	+110	+138



**Seller's remarks / Verkoper se kommentaar:**

RUAN: HARD BESPIERDE KWALITEIT BUL. SELF GEBRUIK

R \_\_\_\_\_

# ERICO E12224

E12224

Lot. 8

EE SCHULENBURG, POSBUS 456 COLIGNY 2725 TEL:27833880518

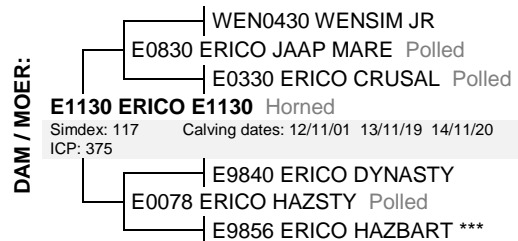
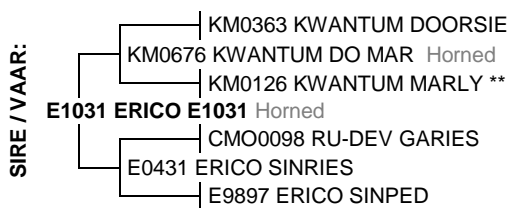
SIMMENTALER

Birth Date: 2012/11/01  
Age: 82 months  
Herdbook: SP  
Horn: Horned

Simdex: 102 Star:  
Days Open: 174  
Calvings: 5  
Calving dates: 15/03/19 16/03/22 17/03/05 18/05/02 19/03/21

FEMALE/VROULIK

Reg. No: 102488010



August 2019 South African Simmentaler GROUP BREEDPLAN

Simmentaler SA - www.simmentaler.org / info@simmentaler.org / 051 446 0580/2

2019	CED	CEM	BW	200	400	600	MCW	MILK	SC	DC	EMA	IMF%	RBY%	SFL	SGF	TS
EBV	-0.8	+1.9	+1.5	+13	+23	+34	+35	+1	--	--	--	--	--	+32	+76	+113
ACC	37%	34%	38%	54%	48%	47%	44%	54%								
BREED	+0.8	+1.0	+1.4	+17	+27	+33	+34	+5	+0.3	-0.5	+0.3	+0.1	+0.2	+56	+110	+138



**Seller's remarks / Verkoper se kommentaar:**

3 IN 1. MET BULKALF E1950 VAN E15133. 3 MAANDE DRAGTIG VAN E1457.

R \_\_\_\_\_

# VOORUITZICHT BOK 1736

JH1736

Lot. 9

JH VAN BILJON, POSBUS 17 VERGELEE 8622 TEL:27833799307

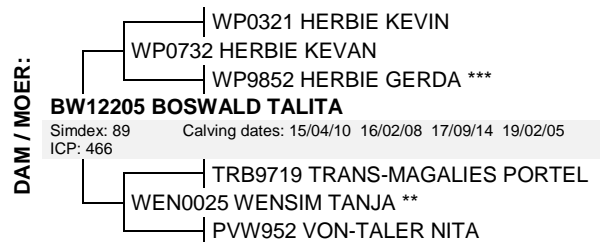
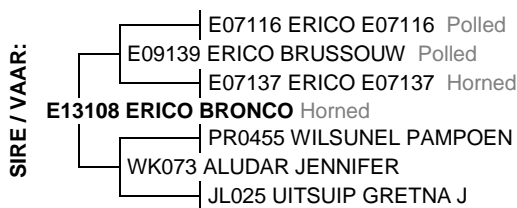
SIMMENTALER

Birth Date: 2017/09/14 DNA: 477061 U, SV  
Age: 23 months  
Herdbook: SP  
Horn: Horned

Reg. Status: REG  
Inspection Date: 2019/09/03

MALE/MANLIK

Reg. No: 103095154



August 2019 South African Simmentaler GROUP BREEDPLAN

Simmentaler SA - www.simmentaler.org / info@simmentaler.org / 051 446 0580/2

2019	CED	CEM	BW	200	400	600	MCW	MILK	SC	DC	EMA	IMF%	RBY%	SFL	SGF	TS
EBV	+1.5	-0.9	+2.0	+16	+22	+28	+28	+2	-0.3	--	--	--	--	+31	+63	+109
ACC	38%	31%	69%	60%	55%	55%	53%	40%	27%							
BREED	+0.8	+1.0	+1.4	+17	+27	+33	+34	+5	+0.3	-0.5	+0.3	+0.1	+0.2	+56	+110	+138



**Seller's remarks / Verkoper se kommentaar:**

BAIE GOEIE BRONCO SEUN OP SKOU VERSE GEBRUIK

R \_\_\_\_\_

## VOORUITZICHT BRONCO1743

JH1743

Lot. 10

JH VAN BILJON, POSBUS 17 VERGELEE 8622 TEL:27833799307

SIMMENTALER

Birth Date: 2017/09/22 DNA: 477063 U, SV  
 Age: 23 months  
 Herdbook: SP  
 Horn: Horned

Reg. Status: REG  
 Inspection Date: 2019/09/03

MALE/MANLIK  
 Reg. No: 103095238



August 2019 South African Simmentaler GROUP BREEDPLAN

Simmentaler SA - [www.simmentaler.org](http://www.simmentaler.org) / [info@simmentaler.org](mailto:info@simmentaler.org) / 051 446 0580/2

2019	CED	CEM	BW	200	400	600	MCW	MILK	SC	DC	EMA	IMF%	RBY%	SFL	SGF	TS
EBV	-0.2	-0.4	+2.9	+14	+18	+27	+31	+3	-0.3	--	--	--	--	-3	+27	+75
ACC	37%	32%	70%	61%	57%	57%	54%	39%	30%							
BREED	+0.8	+1.0	+1.4	+17	+27	+33	+34	+5	+0.3	-0.5	+0.3	+0.1	+0.2	+56	+110	+138



**Seller's remarks / Verkoper se kommentaar:**  
 BRONCO SEUN WAT DIK, DIEP EN BREED IS

R \_\_\_\_\_

## ERICO E17139

E17139

Lot. 11

EE SCHULENBURG, POSBUS 456 COLIGNY 2725 TEL:27833880518

SIMMENTALER

Birth Date: 2017/08/31 Simdex: Star:  
 Age: 24 months Days Open:  
 Herdbook: SP Calvings:  
 Horn: Horned Calving dates:

Reg. Status: REG  
 Inspection Date: 2019/09/03

FEMALE/VROULIK  
 Reg. No: 103094678



August 2019 South African Simmentaler GROUP BREEDPLAN

Simmentaler SA - [www.simmentaler.org](http://www.simmentaler.org) / [info@simmentaler.org](mailto:info@simmentaler.org) / 051 446 0580/2

2019	CED	CEM	BW	200	400	600	MCW	MILK	SC	DC	EMA	IMF%	RBY%	SFL	SGF	TS
EBV	-5.3	+3.7	+1.9	+19	+29	+38	+37	+3	+0.6	--	--	--	--	+38	+92	+115
ACC	37%	30%	52%	62%	56%	54%	51%	38%	31%							
BREED	+0.8	+1.0	+1.4	+17	+27	+33	+34	+5	+0.3	-0.5	+0.3	+0.1	+0.2	+56	+110	+138



**Seller's remarks / Verkoper se kommentaar:**  
 6 MAANDE DRAGTIG VAN JH1736.

R \_\_\_\_\_

## ERICO E15133

E15133

Lot. 12

EE SCHULENBURG, POSBUS 456 COLIGNY 2725 TEL:27833880518

SIMMENTALER

Birth Date: 2015/09/20 DNA: 452034, SV  
 Age: 47 months  
 Herdbook: SP  
 Horn: Horned

Reg. Status: REG  
 Inspection Date: 2017/11/23

MALE/MANLIK  
 Reg. No: 102861838



August 2019 South African Simmentaler GROUP BREEDPLAN

Simmentaler SA - [www.simmentaler.org](http://www.simmentaler.org) / [info@simmentaler.org](mailto:info@simmentaler.org) / 051 446 0580/2

2019	CED	CEM	BW	200	400	600	MCW	MILK	SC	DC	EMA	IMF%	RBY%	SFL	SGF	TS
EBV	-2.7	+0.2	+1.1	+7	+11	+17	+18	+3	--	--	--	--	--	+5	+33	+40
ACC	40%	34%	41%	74%	65%	63%	58%	41%								
BREED	+0.8	+1.0	+1.4	+17	+27	+33	+34	+5	+0.3	-0.5	+0.3	+0.1	+0.2	+56	+110	+138



**Seller's remarks / Verkoper se kommentaar:**  
 RESERVE SENIOR KAMPIOEN VRYBURG 2019.

R \_\_\_\_\_

### VOORUITZICHT LUCY 1763

JH1763

Lot. 13

JH VAN BILJON, POSBUS 17 VERGELEE 8622 TEL:27833799307

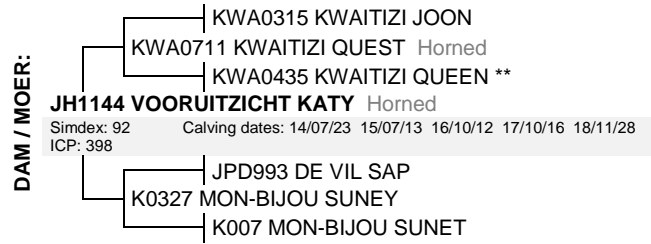
SIMMENTALER

Birth Date: 2017/10/16  
Age: 22 months  
Herdbook: SP  
Horn: Horned

Simdex:  
Days Open:  
Calvings:  
Calving dates:

Star:  
Reg. Status: REG  
Inspection Date: 2019/09/03

FEMALE/VROULIK  
Reg. No: 103129052



August 2019 South African Simmentaler GROUP BREEDPLAN

Simmentaler SA - [www.simmentaler.org](http://www.simmentaler.org) / [info@simmentaler.org](mailto:info@simmentaler.org) / 051 446 0580/2

2019	CED	CEM	BW	200	400	600	MCW	MILK	SC	DC	EMA	IMF%	RBY%	SFL	SGF	TS
EBV	+0.4	-0.2	+1.4	+15	+26	+33	+29	+5	--	--	--	--	--	+55	+100	+130
ACC	36%	28%	71%	61%	56%	56%	54%	39%								
BREED	+0.8	+1.0	+1.4	+17	+27	+33	+34	+5	+0.3	-0.5	+0.3	+0.1	+0.2	+56	+110	+138



**Seller's remarks / Verkoper se kommentaar:**  
SKOU VERS 7MNDE DRAGTIG VAN LOT 9 JH1736

R \_\_\_\_\_

### VOORUITZICHT KLARHA 1771

JH1771

Lot. 14

JH VAN BILJON, POSBUS 17 VERGELEE 8622 TEL:27833799307

SIMMENTALER

Birth Date: 2017/10/26  
Age: 22 months  
Herdbook: SP  
Horn: Horned

Simdex:  
Days Open:  
Calvings:  
Calving dates:

Star:  
Reg. Status: REG  
Inspection Date: 2019/09/03

FEMALE/VROULIK  
Reg. No: 103129136



August 2019 South African Simmentaler GROUP BREEDPLAN

Simmentaler SA - [www.simmentaler.org](http://www.simmentaler.org) / [info@simmentaler.org](mailto:info@simmentaler.org) / 051 446 0580/2

2019	CED	CEM	BW	200	400	600	MCW	MILK	SC	DC	EMA	IMF%	RBY%	SFL	SGF	TS
EBV	-0.4	+1.9	+1.6	+17	+29	+37	+33	+4	--	--	--	--	--	+59	+112	+138
ACC	38%	30%	71%	63%	58%	58%	55%	40%								
BREED	+0.8	+1.0	+1.4	+17	+27	+33	+34	+5	+0.3	-0.5	+0.3	+0.1	+0.2	+56	+110	+138



**Seller's remarks / Verkoper se kommentaar:**  
SKOU VERS 7MNDE DRAGTIG VAN LOT 9 JH1736

R \_\_\_\_\_

### ERICO E158

E158

Lot. 15

EE SCHULENBURG, POSBUS 456 COLIGNY 2725 TEL:27833880518

SIMMENTALER

Birth Date: 2015/03/10  
Age: 54 months  
Herdbook: SP  
Horn: Polled

Simdex: 99  
Days Open: 359  
Calvings: 2  
Calving dates: 17/09/11 18/09/17

Star:  
Reg. Status: REG  
Inspection Date: 2016/10/13

FEMALE/VROULIK  
Reg. No: 102810165



August 2019 South African Simmentaler GROUP BREEDPLAN

Simmentaler SA - [www.simmentaler.org](http://www.simmentaler.org) / [info@simmentaler.org](mailto:info@simmentaler.org) / 051 446 0580/2

2019	CED	CEM	BW	200	400	600	MCW	MILK	SC	DC	EMA	IMF%	RBY%	SFL	SGF	TS
EBV	+1.6	+0.9	+1.3	+15	+23	+29	+31	+6	--	--	--	--	--	+42	+81	+121
ACC	32%	26%	53%	62%	57%	55%	51%	46%								
BREED	+0.8	+1.0	+1.4	+17	+27	+33	+34	+5	+0.3	-0.5	+0.3	+0.1	+0.2	+56	+110	+138



**Seller's remarks / Verkoper se kommentaar:**  
POENA KOEI. 8 MAANDE DRAGTIG VAN AB1110.

R \_\_\_\_\_

<b>ERICO E1744</b>	<b>E1744</b>	<b>Lot. 16</b>
<b>EE SCHULENBURG, POSBUS 456 COLIGNY 2725 TEL:27833880518</b>		<b>SIMMENTALER</b>
<b>Birth Date:</b> 2017/03/23 <b>DNA:</b> 477050 u, SV	<b>Reg. Status:</b> REG	<b>MALE/MANLIK</b>
<b>Age:</b> 29 months	<b>Inspection Date:</b> 2018/10/11	<b>Reg. No:</b> 103057303
<b>Herdbook:</b> SP		
<b>Horn:</b> Horned		

<p><b>SIRE / VAAR:</b></p> <ul style="list-style-type: none"> <li>— E07116 ERICO E07116 Polled</li> <li>— E09139 ERICO BRUSSOUW Polled</li> <li>— E07137 ERICO E07137 Horned</li> <li><b>JV1320 ALVOS PETRIE</b></li> <li>— PJO0859 TAAIBOSSPRUIT PRETORIA Horned</li> <li>— JV1040 ALVOS PETRO Horned</li> <li>— PJO085 TAAIBOSSPRUIT GRIET 2 Horned</li> </ul>	<p><b>DAM / MOER:</b></p> <ul style="list-style-type: none"> <li>— PJO0138 TAAIBOSSPRUIT PROMAN</li> <li>— PJO0859 TAAIBOSSPRUIT PRETORIA Horned</li> <li>— PJO03208 TAAIBOSSPRUIT ERNA 2 *</li> <li><b>E1167 ERICO E1167 Horned</b></li> <li>Simdex: 103      Calving dates: 12/11/20 13/10/20 15/04/29 16/03/11 17/03/23</li> <li>ICP: 424      18/09/06</li> <li>— MS97206 KYKSO HAMGER</li> <li>— JH0359 VOORUITZICHT CONNIE III Polled</li> <li>— JH9920 VOORUITZICHT CONNIE II * Polled</li> </ul>
--	--

August 2019 South African Simmentaler GROUP BREEDPLAN	Simmentaler SA - <a href="http://www.simmentaler.org">www.simmentaler.org</a> / <a href="mailto:info@simmentaler.org">info@simmentaler.org</a> / 051 446 0580/2
---	---

2019	CED	CEM	BW	200	400	600	MCW	MILK	SC	DC	EMA	IMF%	RBY%	SFL	SGF	TS
EBV	+3.5	-2.2	+1.1	+11	+20	+26	+29	+4	-0.4	--	--	--	--	+31	+69	+111
ACC	36%	33%	45%	58%	53%	52%	49%	41%	27%							
BREED	+0.8	+1.0	+1.4	+17	+27	+33	+34	+5	+0.3	-0.5	+0.3	+0.1	+0.2	+56	+110	+138

**Seller's remarks / Verkoper se kommentaar:**  
RESERWE GROOTKAMPIOEN VRYBURG 2019

R

<b>VOORUITZICHT CARMIN 1774</b>	<b>JH1774</b>	<b>Lot. 17</b>
<b>JH VAN BILJON, POSBUS 17 VERGELEE 8622 TEL:27833799307</b>		<b>SIMMENTALER</b>
<b>Birth Date:</b> 2017/11/03 <b>Simdex:</b> <b>Star:</b>	<b>Reg. Status:</b> REG	<b>FEMALE/VROULIK</b>
<b>Age:</b> 22 months	<b>Days Open:</b>	<b>Reg. No:</b> 103129169
<b>Herdbook:</b> SP	<b>Calvings:</b>	
<b>Horn:</b> Horned	<b>Calving dates:</b>	

<p><b>SIRE / VAAR:</b></p> <ul style="list-style-type: none"> <li>— E07116 ERICO E07116 Polled</li> <li>— E09139 ERICO BRUSSOUW Polled</li> <li>— E07137 ERICO E07137 Horned</li> <li><b>E13108 ERICO BRONCO Horned</b></li> <li>— PR0455 WILSUNEL PAMPOEN</li> <li>— WK073 ALUDAR JENNIFER</li> <li>— JL025 UITSUIP GRETN A J</li> </ul>	<p><b>DAM / MOER:</b></p> <ul style="list-style-type: none"> <li>— PN07147 LEEUPOORT BRITS Horned</li> <li>— PN09183 LEEUPOORT VAN ZYL Horned</li> <li>— CE9920 SIMLEE MARIANA ***</li> <li><b>JH1294 VOORUITZICHT ZETTY Horned</b></li> <li>Simdex: 92      Calving dates: 15/05/17 16/10/17 17/11/03 18/10/22</li> <li>ICP: 418</li> <li>— RAP0014 RAPOLE STAMPER</li> <li>— JH04255 VOORUITZICHT ISA I</li> <li>— JH0028 VOORUITZICHT ISA</li> </ul>
---	---

August 2019 South African Simmentaler GROUP BREEDPLAN	Simmentaler SA - <a href="http://www.simmentaler.org">www.simmentaler.org</a> / <a href="mailto:info@simmentaler.org">info@simmentaler.org</a> / 051 446 0580/2
---	---

2019	CED	CEM	BW	200	400	600	MCW	MILK	SC	DC	EMA	IMF%	RBY%	SFL	SGF	TS
EBV	-1.5	-1.9	+2.4	+17	+27	+34	+44	+0	-0.2	--	--	--	--	+13	+72	+114
ACC	38%	33%	70%	61%	55%	56%	53%	39%	27%							
BREED	+0.8	+1.0	+1.4	+17	+27	+33	+34	+5	+0.3	-0.5	+0.3	+0.1	+0.2	+56	+110	+138

**Seller's remarks / Verkoper se kommentaar:**  
SKOU VERS 6MNDE DRAGTIG VAN LOT 9 JH1736

R

<b>VOORUITZICHT ALLY</b>	<b>JH1586</b>	<b>Lot. 18</b>
<b>JH VAN BILJON, POSBUS 17 VERGELEE 8622 TEL:27833799307</b>		<b>SIMMENTALER</b>
<b>Birth Date:</b> 2015/09/23 <b>Simdex:</b> 100 <b>Star:</b>	<b>Reg. Status:</b> REG	<b>FEMALE/VROULIK</b>
<b>Age:</b> 47 months	<b>Days Open:</b> 177	<b>Reg. No:</b> 102885886
<b>Herdbook:</b> SP	<b>Calvings:</b> 2	
<b>Horn:</b> Horned	<b>Calving dates:</b> 17/11/15 19/03/18	

<p><b>SIRE / VAAR:</b></p> <ul style="list-style-type: none"> <li>— UG0644 SALERIKA UTHA Disbudded</li> <li>— UG0932 SALERIKA BRUGMAN Disbudded</li> <li>— UG0367 SALERIKA BABARA 2DE Polled</li> <li><b>UG1251 SALERIKA DOLFIE Disbudded</b></li> <li>— MCS01114 CONGOSIM HEXVAS</li> <li>— MCS0612 CONGOSIM DOLLY 3DE ***</li> <li>— MCS98136 CONGOSIM DOLLY</li> </ul>	<p><b>DAM / MOER:</b></p> <ul style="list-style-type: none"> <li>— LAT0033 LATCO GOLD II</li> <li>— PHN0638 NEELSMA SAREL</li> <li>— PHN036 NEELSMA SUMA</li> <li><b>JV0964 ALVOS MELBA Horned</b></li> <li>Simdex: 93      Calving dates: 12/01/19 12/12/06 14/07/26 15/09/23 16/10/12</li> <li>ICP: 416      17/09/26 18/11/17</li> <li>— CMO0253 RU-DEV NOTZI</li> <li>— PHN0713 NEELSMA MIRMA</li> <li>— PHN0441 NEELSMA MIRA</li> </ul>
---	--

August 2019 South African Simmentaler GROUP BREEDPLAN	Simmentaler SA - <a href="http://www.simmentaler.org">www.simmentaler.org</a> / <a href="mailto:info@simmentaler.org">info@simmentaler.org</a> / 051 446 0580/2
---	---

2019	CED	CEM	BW	200	400	600	MCW	MILK	SC	DC	EMA	IMF%	RBY%	SFL	SGF	TS
EBV	+3.4	+1.2	+0.8	+16	+25	+30	+22	+5	--	--	--	--	--	+67	+96	+137
ACC	39%	29%	73%	58%	55%	55%	53%	44%								
BREED	+0.8	+1.0	+1.4	+17	+27	+33	+34	+5	+0.3	-0.5	+0.3	+0.1	+0.2	+56	+110	+138

**Seller's remarks / Verkoper se kommentaar:**  
3IN1 TOP KOEI MET POTENSIELE STOET BULKALF

R

## ERICO E1659

## E1659

## Lot. 19

EE SCHULENBURG, POSBUS 456 COLIGNY 2725 TEL:27833880518

SIMMENTALER

Birth Date: 2016/04/20

Simdex: 105

Star:

Reg. Status: REG

FEMALE/VROULIK

Age: 40 months

Days Open: 370

Inspection Date: 2017/11/23

Reg. No: 102939741

Herdbook: SP

Calvings: 1

Horn: Polled

Calving dates: 18/09/06

SIRE / VAAR:



DAM / MOER:



August 2019 South African Simmentaler GROUP BREEDPLAN

Simmentaler SA - [www.simmentaler.org](http://www.simmentaler.org) / [info@simmentaler.org](mailto:info@simmentaler.org) / 051 446 0580/2

2019	CED	CEM	BW	200	400	600	MCW	MILK	SC	DC	EMA	IMF%	RBY%	SFL	SGF	TS
EBV	+3.2	+4.3	+0.9	+15	+24	+29	+31	+5	+1.0	--	--	--	--	+53	+105	+123
ACC	41%	36%	50%	59%	54%	53%	51%	43%	36%							
BREED	+0.8	+1.0	+1.4	+17	+27	+33	+34	+5	+0.3	-0.5	+0.3	+0.1	+0.2	+56	+110	+138



**Seller's remarks / Verkoper se kommentaar:**

POENA KOEI. 8.5 MAANDE DRAGTIG VAN E15133.

R \_\_\_\_\_

## ERICO E16216

## E16216

## Lot. 20

EE SCHULENBURG, POSBUS 456 COLIGNY 2725 TEL:27833880518

SIMMENTALER

Birth Date: 2016/10/10

DNA: 477019 u, SV

Reg. Status: REG

MALE/MANLIK

Age: 35 months

Inspection Date: 2018/10/11

Herdbook: SP

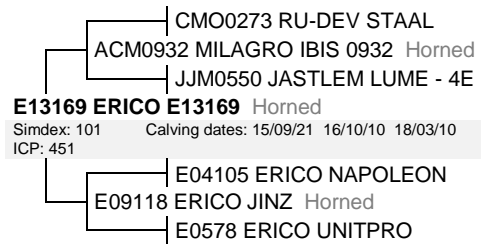
Reg. No: 102990488

Horn: Horned

SIRE / VAAR:



DAM / MOER:



August 2019 South African Simmentaler GROUP BREEDPLAN

Simmentaler SA - [www.simmentaler.org](http://www.simmentaler.org) / [info@simmentaler.org](mailto:info@simmentaler.org) / 051 446 0580/2

2019	CED	CEM	BW	200	400	600	MCW	MILK	SC	DC	EMA	IMF%	RBY%	SFL	SGF	TS
EBV	+2.0	-3.5	+0.7	+17	+22	+28	+30	+2	--	--	--	--	--	--	--	--
ACC	36%	33%	40%	54%	48%	47%	44%	37%								
BREED	+0.8	+1.0	+1.4	+17	+27	+33	+34	+5	+0.3	-0.5	+0.3	+0.1	+0.2	+56	+110	+138



**Seller's remarks / Verkoper se kommentaar:**

DIK ROOI DERKLOU SEUN.

R \_\_\_\_\_

## VOORUITZICHT BANK 1754

## JH1754

## Lot. 21

JH VAN BILJON, POSBUS 17 VERGELEE 8622 TEL:27833799307

SIMMENTALER

Birth Date: 2017/10/02

DNA: 477066 U, SV

Reg. Status: REG

MALE/MANLIK

Age: 23 months

Inspection Date: 2019/09/03

Herdbook: SP

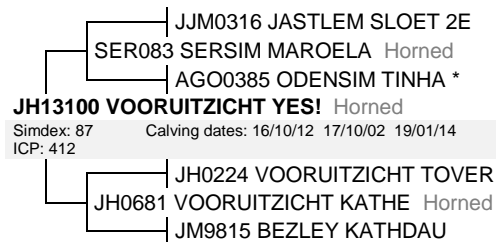
Reg. No: 103095345

Horn: Horned

SIRE / VAAR:



DAM / MOER:



August 2019 South African Simmentaler GROUP BREEDPLAN

Simmentaler SA - [www.simmentaler.org](http://www.simmentaler.org) / [info@simmentaler.org](mailto:info@simmentaler.org) / 051 446 0580/2

2019	CED	CEM	BW	200	400	600	MCW	MILK	SC	DC	EMA	IMF%	RBY%	SFL	SGF	TS
EBV	-2.7	-1.6	+1.3	+21	+28	+35	+38	+4	--	--	--	--	--	+37	+85	+129
ACC	34%	29%	68%	58%	52%	52%	50%	34%								
BREED	+0.8	+1.0	+1.4	+17	+27	+33	+34	+5	+0.3	-0.5	+0.3	+0.1	+0.2	+56	+110	+138



**Seller's remarks / Verkoper se kommentaar:**

BESONDERSE BREEDTE EN DIEPTE 'N VLEIS MASJEN

R \_\_\_\_\_

### VOORUITZICHT LAGHER 1757

JH1757

Lot. 22

JH VAN BILJON, POSBUS 17 VERGELEE 8622 TEL:27833799307

SIMMENTALER

Birth Date: 2017/10/12 DNA: 477065 U, SV  
Age: 22 months  
Herdbook: SP  
Horn: Horned

Reg. Status: REG  
Inspection Date: 2019/09/03

MALE/MANLIK  
Reg. No: 103095386



August 2019 South African Simmentaler GROUP BREEDPLAN

Simmentaler SA - www.simmentaler.org / info@simmentaler.org / 051 446 0580/2

2019	CED	CEM	BW	200	400	600	MCW	MILK	SC	DC	EMA	IMF%	RBY%	SFL	SGF	TS
EBV	-1.6	-0.7	+1.6	+17	+26	+31	+34	+3	--	--	--	--	--	+36	+90	+115
ACC	34%	27%	69%	58%	52%	53%	50%	34%								
BREED	+0.8	+1.0	+1.4	+17	+27	+33	+34	+5	+0.3	-0.5	+0.3	+0.1	+0.2	+56	+110	+138



**Seller's remarks / Verkoper se kommentaar:**  
N GOED GEVLEESDE LEEU SEUN

R \_\_\_\_\_

### ERICO E16227

E16227

Lot. 23

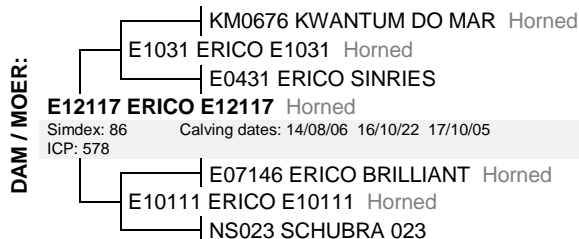
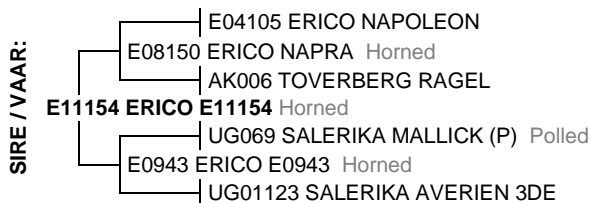
EE SCHULENBURG, POSBUS 456 COLIGNY 2725 TEL:27833880518

SIMMENTALER

Birth Date: 2016/10/22 Simdex: 103 Star:  
Age: 34 months Days Open: 168  
Herdbook: SP Calvings: 1  
Horn: Horned Calving dates: 19/03/27

Reg. Status: REG  
Inspection Date: 2018/10/11

FEMALE/VROULIK  
Reg. No: 102990546



August 2019 South African Simmentaler GROUP BREEDPLAN

Simmentaler SA - www.simmentaler.org / info@simmentaler.org / 051 446 0580/2

2019	CED	CEM	BW	200	400	600	MCW	MILK	SC	DC	EMA	IMF%	RBY%	SFL	SGF	TS
EBV	+1.7	+0.5	+1.7	+19	+27	+35	+41	+2	--	--	--	--	--	+30	+76	+134
ACC	33%	30%	42%	57%	51%	50%	46%	38%								
BREED	+0.8	+1.0	+1.4	+17	+27	+33	+34	+5	+0.3	-0.5	+0.3	+0.1	+0.2	+56	+110	+138



**Seller's remarks / Verkoper se kommentaar:**  
3 IN 1. MET VERSKALF E1960 VAN RUAN. 3 MAANDE DRAGTIG VAN E1457.

R \_\_\_\_\_

### ERICO E1434

E1434

Lot. 24

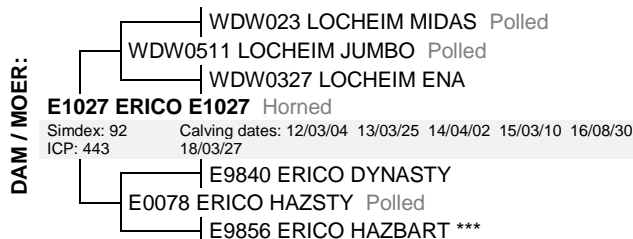
EE SCHULENBURG, POSBUS 456 COLIGNY 2725 TEL:27833880518

SIMMENTALER

Birth Date: 2014/04/02 Simdex: 102 Star:  
Age: 65 months Days Open: 375  
Herdbook: SP Calvings: 3  
Horn: Horned Calving dates: 16/06/06 17/09/14 18/09/01

Reg. Status: REG  
Inspection Date: 2015/09/28

FEMALE/VROULIK  
Reg. No: 102668308



August 2019 South African Simmentaler GROUP BREEDPLAN

Simmentaler SA - www.simmentaler.org / info@simmentaler.org / 051 446 0580/2

2019	CED	CEM	BW	200	400	600	MCW	MILK	SC	DC	EMA	IMF%	RBY%	SFL	SGF	TS
EBV	-2.9	+3.4	+2.0	+16	+24	+33	+36	-1	+0.5	--	--	--	--	+25	+84	+94
ACC	44%	39%	55%	66%	60%	59%	56%	58%	28%							
BREED	+0.8	+1.0	+1.4	+17	+27	+33	+34	+5	+0.3	-0.5	+0.3	+0.1	+0.2	+56	+110	+138



**Seller's remarks / Verkoper se kommentaar:**  
8 MAANDE DRAGTIG VAN AB1110.

R \_\_\_\_\_



### MLOPO GERTRUIDA 3DE (AI)

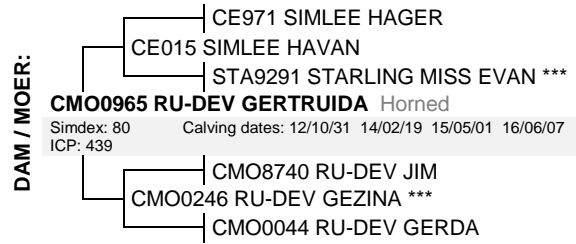
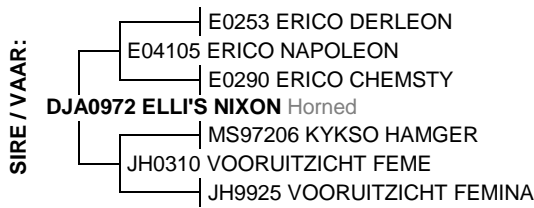
DCP1532

Lot. 25

JH VAN BILJON, POSBUS 17 VERGELEE 8622 TEL:27833799307

SIMMENTALER

Birth Date: 2015/05/01    Simdex: 87    Star:    Reg. Status: REG    FEMALE/VROULIK  
 Age: 52 months    Days Open: 151    Inspection Date: 2017/10/03  
 Herdbook: SP    Calvings: 2    Reg. No: 102844263  
 Horn:    Calving dates: 17/11/09 19/04/13



August 2019 South African Simmentaler GROUP BREEDPLAN

Simmentaler SA - www.simmentaler.org / info@simmentaler.org / 051 446 0580/2

2019	CED	CEM	BW	200	400	600	MCW	MILK	SC	DC	EMA	IMF%	RBY%	SFL	SGF	TS
EBV	+0.0	+1.1	+1.4	+14	+18	+25	+20	+6	-0.4	--	--	--	--	+37	+69	+86
ACC	41%	36%	72%	66%	66%	68%	63%	46%	33%							
BREED	+0.8	+1.0	+1.4	+17	+27	+33	+34	+5	+0.3	-0.5	+0.3	+0.1	+0.2	+56	+110	+138



**Seller's remarks / Verkoper se kommentaar:**

3IN1 POENA KOEI MET MOOI VERS KALF JH1923 VAN BATIESTA

R \_\_\_\_\_

### MLOPO JANA 7DE

DCP1479

Lot. 26

JH VAN BILJON, POSBUS 17 VERGELEE 8622 TEL:27833799307

SIMMENTALER

Birth Date: 2014/12/26    Simdex: 105,    Star:    Reg. Status: REG    FEMALE/VROULIK  
 Age: 56 months    Days Open: 163    Inspection Date: 2016/12/14  
 Herdbook: SP    Calvings: 3    Reg. No: 102843554  
 Horn: Horned    Calving dates: 17/05/05 18/05/23 19/04/01



August 2019 South African Simmentaler GROUP BREEDPLAN

Simmentaler SA - www.simmentaler.org / info@simmentaler.org / 051 446 0580/2

2019	CED	CEM	BW	200	400	600	MCW	MILK	SC	DC	EMA	IMF%	RBY%	SFL	SGF	TS
EBV	-0.3	+4.2	+1.4	+19	+31	+43	+44	+3	+1.2	--	--	--	--	+56	+119	+154
ACC	43%	33%	72%	57%	56%	57%	56%	53%	34%							
BREED	+0.8	+1.0	+1.4	+17	+27	+33	+34	+5	+0.3	-0.5	+0.3	+0.1	+0.2	+56	+110	+138



**Seller's remarks / Verkoper se kommentaar:**

3IN1 MET BELOWENDE POENA BULKALF JH1918 VAN BATIESTA

R \_\_\_\_\_

### ERICO E1399 (AI)

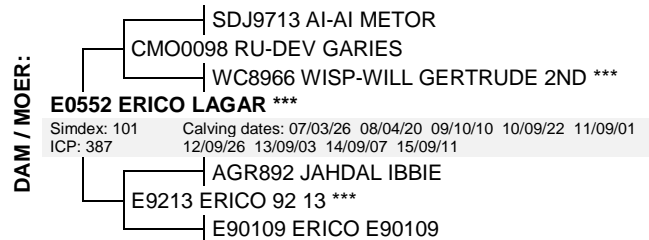
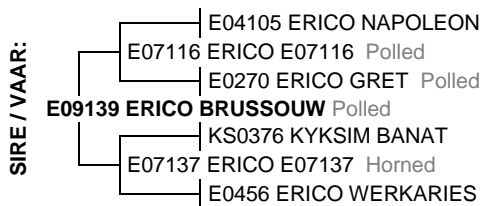
E1399

Lot. 27

EE SCHULENBURG, POSBUS 456 COLIGNY 2725 TEL:27833880518

SIMMENTALER

Birth Date: 2013/09/03    Simdex: 99    Star:    Reg. Status: REG    FEMALE/VROULIK  
 Age: 72 months    Days Open: 179    Inspection Date: 2015/09/28  
 Herdbook: SP    Calvings: 4    Reg. No: 102570736  
 Horn: Polled    Calving dates: 16/02/20 17/04/14 18/04/06 19/03/16



August 2019 South African Simmentaler GROUP BREEDPLAN

Simmentaler SA - www.simmentaler.org / info@simmentaler.org / 051 446 0580/2

2019	CED	CEM	BW	200	400	600	MCW	MILK	SC	DC	EMA	IMF%	RBY%	SFL	SGF	TS
EBV	+1.7	-5.5	+1.4	+13	+18	+26	+30	-1	-0.5	-0.2	-0.9	--	-0.5	+2	+44	+79
ACC	52%	50%	59%	64%	61%	60%	58%	63%	42%	31%	31%		38%			
BREED	+0.8	+1.0	+1.4	+17	+27	+33	+34	+5	+0.3	-0.5	+0.3	+0.1	+0.2	+56	+110	+138



**Seller's remarks / Verkoper se kommentaar:**

3 IN 1. POENA KOEI MET BULKALF E1942 VAN E15133. 5 MAANDE DRAGTIG VAN E1457.

R \_\_\_\_\_

**ERICO E16226**

**E16226**

**Lot. 28**

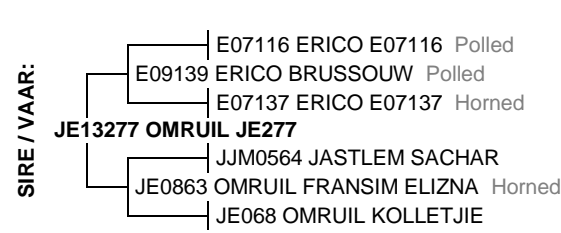
EE SCHULENBURG, POSBUS 456 COLIGNY 2725 TEL:27833880518

**SIMMENTALER**

Birth Date: 2016/10/18 DNA: 477036 u, SV  
Age: 34 months  
Herdbook: SP  
Horn: Horned

Reg. Status: REG  
Inspection Date: 2019/09/03

MALE/MANLIK  
Reg. No: 102990538



August 2019 South African Simmentaler GROUP BREEDPLAN

Simmentaler SA - www.simmentaler.org / info@simmentaler.org / 051 446 0580/2

2019	CED	CEM	BW	200	400	600	MCW	MILK	SC	DC	EMA	IMF%	RBY%	SFL	SGF	TS
EBV	+0.9	-0.3	+2.1	+18	+27	+35	+41	+2	-0.6	--	--	--	--	--	--	--
ACC	38%	36%	46%	52%	48%	47%	45%	45%	29%							
BREED	+0.8	+1.0	+1.4	+17	+27	+33	+34	+5	+0.3	-0.5	+0.3	+0.1	+0.2	+56	+110	+138

**Seller's remarks / Verkoper se kommentaar:**

BUL UIT GOEIE MOEDERLYN.



R \_\_\_\_\_

**VOORUITZICHT URGQY**

**JH179**

**Lot. 29**

JH VAN BILJON, POSBUS 17 VERGELEE 8622 TEL:27833799307

**SIMMENTALER**

Birth Date: 2017/01/12 DNA:  
Age: 31 months  
Herdbook: SP  
Horn: Horned

Reg. Status: REG  
Inspection Date: 2018/09/04

MALE/MANLIK  
Reg. No: 103035853



August 2019 South African Simmentaler GROUP BREEDPLAN

Simmentaler SA - www.simmentaler.org / info@simmentaler.org / 051 446 0580/2

2019	CED	CEM	BW	200	400	600	MCW	MILK	SC	DC	EMA	IMF%	RBY%	SFL	SGF	TS
EBV	+3.3	+2.5	+1.1	+16	+29	+35	+33	+8	+0.5	--	--	--	--	+70	+121	+156
ACC	37%	30%	71%	58%	55%	55%	53%	40%	30%							
BREED	+0.8	+1.0	+1.4	+17	+27	+33	+34	+5	+0.3	-0.5	+0.3	+0.1	+0.2	+56	+110	+138

**Seller's remarks / Verkoper se kommentaar:**

BATIESTA SEUN WAT GOEIE VLEIS DRA



R \_\_\_\_\_

**VOORUITZICHT UGHO**

**JH1631**

**Lot. 30**

JH VAN BILJON, POSBUS 17 VERGELEE 8622 TEL:27833799307

**SIMMENTALER**

Birth Date: 2016/10/10 DNA:  
Age: 35 months  
Herdbook: SP  
Horn: Horned

Reg. Status: REG  
Inspection Date: 2018/09/04

MALE/MANLIK  
Reg. No: 103010278



August 2019 South African Simmentaler GROUP BREEDPLAN

Simmentaler SA - www.simmentaler.org / info@simmentaler.org / 051 446 0580/2

2019	CED	CEM	BW	200	400	600	MCW	MILK	SC	DC	EMA	IMF%	RBY%	SFL	SGF	TS
EBV	+5.2	+1.9	+0.4	+13	+23	+28	+20	+2	--	--	--	--	--	+69	+106	+129
ACC	35%	27%	70%	60%	54%	55%	52%	37%								
BREED	+0.8	+1.0	+1.4	+17	+27	+33	+34	+5	+0.3	-0.5	+0.3	+0.1	+0.2	+56	+110	+138

**Seller's remarks / Verkoper se kommentaar:**

BATIESTA SEUN WAT MET GEMAK OP VERSE GEBRUIK KAN WORD



R \_\_\_\_\_

<b>ERICO E161</b>	<b>E161</b>	<b>Lot. 31</b>																																																																				
<b>EE SCHULENBURG, POSBUS 456 COLIGNY 2725 TEL:27833880518</b>		<b>SIMMENTALER</b>																																																																				
<b>Birth Date:</b> 2016/01/15 <b>Simdex:</b> 93 <b>Star:</b> <b>Reg. Status:</b> REG <b>Age:</b> 43 months <b>Days Open:</b> 362 <b>Inspection Date:</b> 2017/11/23 <b>Herdbook:</b> SP <b>Calvings:</b> 1 <b>Horn:</b> Polled <b>Calving dates:</b> 18/09/14	<b>FEMALE/VROULIK</b> <b>Reg. No:</b> 102938826																																																																					
<b>SIRE / VAAR:</b> E11155 ERICO E11155 Horned E08150 ERICO NAPRA Horned E09172 ERICO E09172 Horned E02112 ERICO SINIKA AK006 TOVERBERG RAGEL E04105 ERICO NAPOLEON	<b>DAM / MOER:</b> E121 ERICO E121 Polled E07116 ERICO E07116 Polled E0270 ERICO GRET Polled NMP058 VLEKKE VASTRAP UG08228 SALERIKA UG08228 B * Disbudded UG03146 SALERIKA 03146 *** Polled																																																																					
August 2019 South African Simmentaler GROUP BREEDPLAN <span style="float: right;">Simmentaler SA - <a href="http://www.simmentaler.org">www.simmentaler.org</a> / <a href="mailto:info@simmentaler.org">info@simmentaler.org</a> / 051 446 0580/2</span>																																																																						
<table border="1" style="width:100%; border-collapse: collapse; text-align: center;"> <thead> <tr> <th>2019</th><th>CED</th><th>CEM</th><th>BW</th><th>200</th><th>400</th><th>600</th><th>MCW</th><th>MILK</th><th>SC</th><th>DC</th><th>EMA</th><th>IMF%</th><th>RBY%</th><th>SFL</th><th>SGF</th><th>TS</th> </tr> </thead> <tbody> <tr> <td>EBV</td><td>+2.9</td><td>+0.1</td><td>+0.7</td><td>+11</td><td>+16</td><td>+23</td><td>+20</td><td>+2</td><td>--</td><td>--</td><td>--</td><td>--</td><td>--</td><td>+30</td><td>+61</td><td>+84</td> </tr> <tr> <td>ACC</td><td>38%</td><td>33%</td><td>47%</td><td>61%</td><td>56%</td><td>55%</td><td>51%</td><td>46%</td><td></td><td></td><td></td><td></td><td></td><td></td><td></td><td></td> </tr> <tr> <td>BREED</td><td>+0.8</td><td>+1.0</td><td>+1.4</td><td>+17</td><td>+27</td><td>+33</td><td>+34</td><td>+5</td><td>+0.3</td><td>-0.5</td><td>+0.3</td><td>+0.1</td><td>+0.2</td><td>+56</td><td>+110</td><td>+138</td> </tr> </tbody> </table>			2019	CED	CEM	BW	200	400	600	MCW	MILK	SC	DC	EMA	IMF%	RBY%	SFL	SGF	TS	EBV	+2.9	+0.1	+0.7	+11	+16	+23	+20	+2	--	--	--	--	--	+30	+61	+84	ACC	38%	33%	47%	61%	56%	55%	51%	46%									BREED	+0.8	+1.0	+1.4	+17	+27	+33	+34	+5	+0.3	-0.5	+0.3	+0.1	+0.2	+56	+110	+138
2019	CED	CEM	BW	200	400	600	MCW	MILK	SC	DC	EMA	IMF%	RBY%	SFL	SGF	TS																																																						
EBV	+2.9	+0.1	+0.7	+11	+16	+23	+20	+2	--	--	--	--	--	+30	+61	+84																																																						
ACC	38%	33%	47%	61%	56%	55%	51%	46%																																																														
BREED	+0.8	+1.0	+1.4	+17	+27	+33	+34	+5	+0.3	-0.5	+0.3	+0.1	+0.2	+56	+110	+138																																																						
<b>Seller's remarks / Verkoper se kommentaar:</b> POENA KOEI. 7 MAANDE DRAGTIG VAN E15133.		<b>R</b> _____																																																																				

<b>ERICO E16162</b>	<b>E16162</b>	<b>Lot. 32</b>																																																																				
<b>EE SCHULENBURG, POSBUS 456 COLIGNY 2725 TEL:27833880518</b>		<b>SIMMENTALER</b>																																																																				
<b>Birth Date:</b> 2016/09/02 <b>Simdex:</b> 117 <b>Star:</b> <b>Reg. Status:</b> REG <b>Age:</b> 36 months <b>Days Open:</b> 342 <b>Inspection Date:</b> 2018/10/11 <b>Herdbook:</b> SP <b>Calvings:</b> 1 <b>Horn:</b> Horned <b>Calving dates:</b> 18/10/04	<b>FEMALE/VROULIK</b> <b>Reg. No:</b> 102989449																																																																					
<b>SIRE / VAAR:</b> E12121 ERICO BA-BUSH Scurred E09139 ERICO BRUSSOUW Polled E07137 ERICO E07137 Horned E0666 ERICO SESHALF E0858 ERICO E0858 Horned E026 ERICO DORKA E07116 ERICO E07116 Polled	<b>DAM / MOER:</b> E08139 ERICO E08139 Horned E0543 ERICO BAROPRO E0042 ERICO BARO MS9496 KYKSO HADAM MS0015 KYKSO ATDA MS95169 KYKSO ATAL ** PJO0138 TAAIBOSSPRUIT PROMAN																																																																					
August 2019 South African Simmentaler GROUP BREEDPLAN <span style="float: right;">Simmentaler SA - <a href="http://www.simmentaler.org">www.simmentaler.org</a> / <a href="mailto:info@simmentaler.org">info@simmentaler.org</a> / 051 446 0580/2</span>																																																																						
<table border="1" style="width:100%; border-collapse: collapse; text-align: center;"> <thead> <tr> <th>2019</th><th>CED</th><th>CEM</th><th>BW</th><th>200</th><th>400</th><th>600</th><th>MCW</th><th>MILK</th><th>SC</th><th>DC</th><th>EMA</th><th>IMF%</th><th>RBY%</th><th>SFL</th><th>SGF</th><th>TS</th> </tr> </thead> <tbody> <tr> <td>EBV</td><td>+2.2</td><td>-0.5</td><td>+1.7</td><td>+17</td><td>+26</td><td>+35</td><td>+44</td><td>+3</td><td>--</td><td>--</td><td>--</td><td>--</td><td>--</td><td>+21</td><td>+74</td><td>+128</td> </tr> <tr> <td>ACC</td><td>38%</td><td>36%</td><td>51%</td><td>64%</td><td>57%</td><td>56%</td><td>52%</td><td>50%</td><td></td><td></td><td></td><td></td><td></td><td></td><td></td><td></td> </tr> <tr> <td>BREED</td><td>+0.8</td><td>+1.0</td><td>+1.4</td><td>+17</td><td>+27</td><td>+33</td><td>+34</td><td>+5</td><td>+0.3</td><td>-0.5</td><td>+0.3</td><td>+0.1</td><td>+0.2</td><td>+56</td><td>+110</td><td>+138</td> </tr> </tbody> </table>			2019	CED	CEM	BW	200	400	600	MCW	MILK	SC	DC	EMA	IMF%	RBY%	SFL	SGF	TS	EBV	+2.2	-0.5	+1.7	+17	+26	+35	+44	+3	--	--	--	--	--	+21	+74	+128	ACC	38%	36%	51%	64%	57%	56%	52%	50%									BREED	+0.8	+1.0	+1.4	+17	+27	+33	+34	+5	+0.3	-0.5	+0.3	+0.1	+0.2	+56	+110	+138
2019	CED	CEM	BW	200	400	600	MCW	MILK	SC	DC	EMA	IMF%	RBY%	SFL	SGF	TS																																																						
EBV	+2.2	-0.5	+1.7	+17	+26	+35	+44	+3	--	--	--	--	--	+21	+74	+128																																																						
ACC	38%	36%	51%	64%	57%	56%	52%	50%																																																														
BREED	+0.8	+1.0	+1.4	+17	+27	+33	+34	+5	+0.3	-0.5	+0.3	+0.1	+0.2	+56	+110	+138																																																						
<b>Seller's remarks / Verkoper se kommentaar:</b> 7 MAANDE DRAGTIG VAN E15133.		<b>R</b> _____																																																																				

<b>VOORUITZICHT BELLA</b>	<b>JH1596</b>	<b>Lot. 33</b>																																																																				
<b>JH VAN BILJON, POSBUS 17 VERGELEE 8622 TEL:27833799307</b>		<b>SIMMENTALER</b>																																																																				
<b>Birth Date:</b> 2015/10/14 <b>Simdex:</b> 98 <b>Star:</b> <b>Reg. Status:</b> REG <b>Age:</b> 46 months <b>Days Open:</b> 124 <b>Inspection Date:</b> 2017/04/17 <b>Herdbook:</b> SP <b>Calvings:</b> 2 <b>Horn:</b> Horned <b>Calving dates:</b> 18/01/04 19/05/10	<b>FEMALE/VROULIK</b> <b>Reg. No:</b> 102885969																																																																					
<b>SIRE / VAAR:</b> BW1272 BOSWALD EZIBIT 72/12 UG0481 SALERIKA EKSELLENT Polled PN95112 LEEUPOORT MELBA MS97206 KYKSO HAMGER JH0135 VOORUITZICHT JH0135 AK9647 TOVERBERG LADY BW07177 BOSWALD EXZIBIT POENA 177/07 Polled	<b>DAM / MOER:</b> JH1362 VOORUITZICHT JELLY Horned PN09236 LEEUPOORT ASTALON Horned PN05192 LEEUPOORT BARANTIG * Horned JH0653 VOORUITZICHT DIKGAT 2 Horned JH0954 VOORUITZICHT PADTSY Horned JH0232 VOORUITZICHT PADDI I																																																																					
August 2019 South African Simmentaler GROUP BREEDPLAN <span style="float: right;">Simmentaler SA - <a href="http://www.simmentaler.org">www.simmentaler.org</a> / <a href="mailto:info@simmentaler.org">info@simmentaler.org</a> / 051 446 0580/2</span>																																																																						
<table border="1" style="width:100%; border-collapse: collapse; text-align: center;"> <thead> <tr> <th>2019</th><th>CED</th><th>CEM</th><th>BW</th><th>200</th><th>400</th><th>600</th><th>MCW</th><th>MILK</th><th>SC</th><th>DC</th><th>EMA</th><th>IMF%</th><th>RBY%</th><th>SFL</th><th>SGF</th><th>TS</th> </tr> </thead> <tbody> <tr> <td>EBV</td><td>-1.4</td><td>-0.6</td><td>+1.8</td><td>+15</td><td>+21</td><td>+27</td><td>+29</td><td>+1</td><td>--</td><td>--</td><td>--</td><td>--</td><td>--</td><td>+23</td><td>+61</td><td>+92</td> </tr> <tr> <td>ACC</td><td>37%</td><td>29%</td><td>59%</td><td>52%</td><td>47%</td><td>48%</td><td>46%</td><td>40%</td><td></td><td></td><td></td><td></td><td></td><td></td><td></td><td></td> </tr> <tr> <td>BREED</td><td>+0.8</td><td>+1.0</td><td>+1.4</td><td>+17</td><td>+27</td><td>+33</td><td>+34</td><td>+5</td><td>+0.3</td><td>-0.5</td><td>+0.3</td><td>+0.1</td><td>+0.2</td><td>+56</td><td>+110</td><td>+138</td> </tr> </tbody> </table>			2019	CED	CEM	BW	200	400	600	MCW	MILK	SC	DC	EMA	IMF%	RBY%	SFL	SGF	TS	EBV	-1.4	-0.6	+1.8	+15	+21	+27	+29	+1	--	--	--	--	--	+23	+61	+92	ACC	37%	29%	59%	52%	47%	48%	46%	40%									BREED	+0.8	+1.0	+1.4	+17	+27	+33	+34	+5	+0.3	-0.5	+0.3	+0.1	+0.2	+56	+110	+138
2019	CED	CEM	BW	200	400	600	MCW	MILK	SC	DC	EMA	IMF%	RBY%	SFL	SGF	TS																																																						
EBV	-1.4	-0.6	+1.8	+15	+21	+27	+29	+1	--	--	--	--	--	+23	+61	+92																																																						
ACC	37%	29%	59%	52%	47%	48%	46%	40%																																																														
BREED	+0.8	+1.0	+1.4	+17	+27	+33	+34	+5	+0.3	-0.5	+0.3	+0.1	+0.2	+56	+110	+138																																																						
<b>Seller's remarks / Verkoper se kommentaar:</b> 3IN1 BESONDERSE KEFFERTJIE DOGTER MET VERSKALF VAN BOKKA		<b>R</b> _____																																																																				

### MLOPO UNA 3 DE

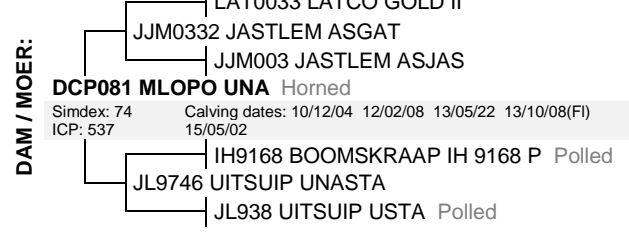
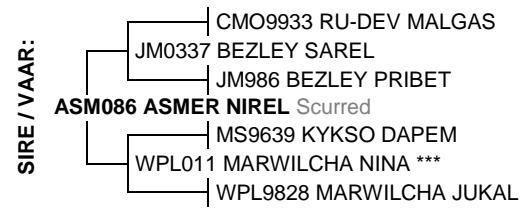
**DCP1335**

**Lot. 34**

JH VAN BILJON, POSBUS 17 VERGELEE 8622 TEL:27833799307

**SIMMENTALER**

Birth Date: 2013/05/22    Simdex: 94,    Star:    Reg. Status: REG    FEMALE/VROULIK  
 Age: 75 months    Days Open: 171    Inspection Date: 2014/05/04  
 Herdbook: SP    Calvings: 4    Reg. No: 102538055  
 Horn:    Calving dates: 15/06/28 16/05/18 18/01/22 19/03/24



August 2019 South African Simmentaler GROUP BREEDPLAN    Simmentaler SA - www.simmentaler.org / info@simmentaler.org / 051 446 0580/2

2019	CED	CEM	BW	200	400	600	MCW	MILK	SC	DC	EMA	IMF%	RBY%	SFL	SGF	TS
EBV	+1.8	+2.5	+1.8	+14	+27	+29	+40	+1	+0.3	--	--	--	--	+41	+97	+135
ACC	40%	32%	72%	67%	66%	67%	69%	57%	35%							
BREED	+0.8	+1.0	+1.4	+17	+27	+33	+34	+5	+0.3	-0.5	+0.3	+0.1	+0.2	+56	+110	+138



**Seller's remarks / Verkoper se kommentaar:**  
3IN1 MET MOOI BATIESTA VERSKALF JH1917

R \_\_\_\_\_

### ERICO E13177

**E13177**

**Lot. 35**

EE SCHULENBURG, POSBUS 456 COLIGNY 2725 TEL:27833880518

**SIMMENTALER**

Birth Date: 2013/09/25    Simdex: 101    Star:    Reg. Status: REG    FEMALE/VROULIK  
 Age: 71 months    Days Open: 185    Inspection Date: 2015/09/28  
 Herdbook: SP    Calvings: 4    Reg. No: 102579505  
 Horn: Horned    Calving dates: 16/02/28 17/04/22 18/03/19 19/03/10



August 2019 South African Simmentaler GROUP BREEDPLAN    Simmentaler SA - www.simmentaler.org / info@simmentaler.org / 051 446 0580/2

2019	CED	CEM	BW	200	400	600	MCW	MILK	SC	DC	EMA	IMF%	RBY%	SFL	SGF	TS
EBV	-5.4	+3.6	+1.3	+13	+23	+34	+45	+4	+0.1	+0.6	+0.2	+0.0	+0.0	+1	+55	+88
ACC	49%	47%	57%	68%	64%	63%	60%	61%	43%	35%	32%	36%	38%			
BREED	+0.8	+1.0	+1.4	+17	+27	+33	+34	+5	+0.3	-0.5	+0.3	+0.1	+0.2	+56	+110	+138



**Seller's remarks / Verkoper se kommentaar:**  
3 IN 1. MET BULKALF E 1934 VAN E15133. 6 MAANDE DRAGTIG VAN E1457.

R \_\_\_\_\_

### ERICO E1760

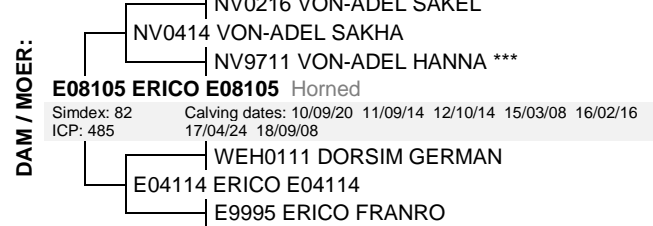
**E1760**

**Lot. 36**

EE SCHULENBURG, POSBUS 456 COLIGNY 2725 TEL:27833880518

**SIMMENTALER**

Birth Date: 2017/04/24    DNA: 477042 u, SV    Reg. Status: REG    MALE/MANLIK  
 Age: 28 months    Inspection Date: 2018/10/11  
 Herdbook: SP    Reg. No: 103057469  
 Horn: Horned



August 2019 South African Simmentaler GROUP BREEDPLAN    Simmentaler SA - www.simmentaler.org / info@simmentaler.org / 051 446 0580/2

2019	CED	CEM	BW	200	400	600	MCW	MILK	SC	DC	EMA	IMF%	RBY%	SFL	SGF	TS
EBV	-5.2	+2.7	+1.5	+15	+25	+29	+29	+6	+0.5	--	--	--	--	+29	+65	+94
ACC	37%	31%	52%	53%	48%	47%	45%	37%	30%							
BREED	+0.8	+1.0	+1.4	+17	+27	+33	+34	+5	+0.3	-0.5	+0.3	+0.1	+0.2	+56	+110	+138



**Seller's remarks / Verkoper se kommentaar:**  
BREEDTE EN BESPIERING

R \_\_\_\_\_

<b>MLOPO ROSA 4DE (AI)</b>										<b>DCP1563</b>					<b>Lot. 37</b>	
JH VAN BILJON, POSBUS 17 VERGELEE 8622 TEL:27833799307										SIMMENTALER						
Birth Date: 2015/06/22		Simdex: 88		Star:		Reg. Status: REG			FEMALE/VROULIK							
Age: 50 months		Days Open: 115		Inspection Date: 2016/12/14			Reg. No: 102844511									
Herdbook: SP		Calvings: 2														
Horn: Polled		Calving dates: 18/06/26 19/05/19														

<p><b>SIRE / VAAR:</b></p> <pre> graph TD     S1[E0253 ERICO DERLEON] --- S2[E04105 ERICO NAPOLEON]     S2 --- S3[E0290 ERICO CHEMSTY]     S3 --- S4[DJA0972 ELLI'S NIXON Horned]     S4 --- S5[MS97206 KYKSO HAMGER]     S5 --- S6[JH0310 VOORUITZICHT FEME]     S6 --- S7[JH9925 VOORUITZICHT FEMINA]         </pre>	<p><b>DAM / MOER:</b></p> <pre> graph TD     D1[WC0078 WISP-WILL DEREK 3] --- D2[WC049 WISP-WILL ROWAN 2]     D2 --- D3[WC9837 WISP-WILL ROSIE 10]     D3 --- D4[PHN0823 NEELSMA ROSA *** Horned]     D4 --- D5[Simdex: 92 Calving dates: 11/03/08(Ab) 12/04/28 13/05/12 14/05/11]     D4 --- D6[ICP: 400 15/06/22 16/05/23 17/07/22 18/11/02]     D6 --- D7[PHN9935 NEELSMA CARLU]     D7 --- D8[PHN037 NEELSMA ROMY *]     D8 --- D9[PHN016 NEELSMA RONEL **]         </pre>
--	--

August 2019 South African Simmentaler GROUP BREEDPLAN										Simmentaler SA - <a href="http://www.simmentaler.org">www.simmentaler.org</a> / <a href="mailto:info@simmentaler.org">info@simmentaler.org</a> / 051 446 0580/2						
2019	CED	CEM	BW	200	400	600	MCW	MILK	SC	DC	EMA	IMF%	RBY%	SFL	SGF	TS
EBV	-0.8	+0.3	+1.9	+19	+27	+40	+39	+4	-0.3	--	--	--	--	+50	+113	+138
ACC	41%	35%	72%	66%	66%	68%	62%	47%	32%							
BREED	+0.8	+1.0	+1.4	+17	+27	+33	+34	+5	+0.3	-0.5	+0.3	+0.1	+0.2	+56	+110	+138

**Seller's remarks / Verkoper se kommentaar:**  
3IN1 MET VERSKALF JH1928 VAN BATIOSTA

R

<b>VOORUITZICHT ANRUH</b>										<b>JH144</b>					<b>Lot. 38</b>	
JH VAN BILJON, POSBUS 17 VERGELEE 8622 TEL:27833799307										SIMMENTALER						
Birth Date: 2014/01/20		Simdex: 85		Star:		Reg. Status: REG			FEMALE/VROULIK							
Age: 67 months		Days Open: 171		Inspection Date: 2016/07/25			Reg. No: 102667847									
Herdbook: SP		Calvings: 3														
Horn: Horned		Calving dates: 17/01/19 17/12/04 19/03/24														

<p><b>SIRE / VAAR:</b></p> <pre> graph TD     S1[JJM9913 JASTLEM CARNALLIE] --- S2[JJM0316 JASTLEM SLOET 2E]     S2 --- S3[JJM9711 JASTLEM SALLY 1E ***]     S3 --- S4[SER083 SERSIM MAROELA Horned]     S4 --- S5[CE0112 SIMLEE HAGMAR]     S5 --- S6[AGO0385 ODENSIM TINHA *]     S6 --- S7[AGO9568 ODENSIM TINKA 3]         </pre>	<p><b>DAM / MOER:</b></p> <pre> graph TD     D1[CMO9488 RU-DEV STAMPER] --- D2[RAP0014 RAPOLE STAMPER]     D2 --- D3[CMO9670 RU-DEV ISA]     D3 --- D4[JH0434 VOORUITZICHT ANNETTE]     D4 --- D5[Simdex: 81 Calving dates: 06/10/21 07/10/17 09/04/11 11/10/23 12/09/13]     D4 --- D6[ICP: 490 14/01/20 15/01/22 16/03/12]     D6 --- D7[MS9542 KYKSO HAPED]     D7 --- D8[AK003 TOVERBERG ANET **]     D8 --- D9[AK9518 TOVERBERG ALET]         </pre>
---	---

August 2019 South African Simmentaler GROUP BREEDPLAN										Simmentaler SA - <a href="http://www.simmentaler.org">www.simmentaler.org</a> / <a href="mailto:info@simmentaler.org">info@simmentaler.org</a> / 051 446 0580/2						
2019	CED	CEM	BW	200	400	600	MCW	MILK	SC	DC	EMA	IMF%	RBY%	SFL	SGF	TS
EBV	-1.8	-4.8	+1.2	+13	+17	+22	+27	+3	-0.2	--	--	--	--	+4	+26	+78
ACC	46%	40%	74%	56%	55%	56%	56%	49%	34%							
BREED	+0.8	+1.0	+1.4	+17	+27	+33	+34	+5	+0.3	-0.5	+0.3	+0.1	+0.2	+56	+110	+138

**Seller's remarks / Verkoper se kommentaar:**  
3IN1 MET VERSKALF JH1916 VAN BRONCO

R

<b>ERICO E16208</b>										<b>E16208</b>					<b>Lot. 39</b>	
EE SCHULENBURG, POSBUS 456 COLIGNY 2725 TEL:27833880518										SIMMENTALER						
Birth Date: 2016/10/05		Simdex: 102		Star:		Reg. Status: REG			FEMALE/VROULIK							
Age: 35 months		Days Open: 175		Inspection Date: 2018/10/11			Reg. No: 102989720									
Herdbook: SP		Calvings: 1														
Horn: Horned		Calving dates: 19/03/20														

<p><b>SIRE / VAAR:</b></p> <pre> graph TD     S1[E04105 ERICO NAPOLEON] --- S2[E08150 ERICO NAPRA Horned]     S2 --- S3[AK006 TOVERBERG RAGEL]     S3 --- S4[E11154 ERICO E11154 Horned]     S4 --- S5[UG069 SALERIKA MALLICK (P) Polled]     S5 --- S6[E0943 ERICO E0943 Horned]     S6 --- S7[UG01123 SALERIKA AVERIEN 3DE]         </pre>	<p><b>DAM / MOER:</b></p> <pre> graph TD     D1[E0253 ERICO DERLEON] --- D2[E04105 ERICO NAPOLEON]     D2 --- D3[E0290 ERICO CHEMSTY]     D3 --- D4[E09118 ERICO JINZ Horned]     D4 --- D5[Simdex: 93 Calving dates: 12/07/01 13/09/20 14/09/01 15/08/22 16/10/05]     D4 --- D6[ICP: 394 17/11/18]     D6 --- D7[PJO0138 TAAIBOSSPRUIT PROMAN]     D7 --- D8[E0578 ERICO UNITPRO]     D8 --- D9[E9636 ERICO UNIT ***]         </pre>
--	--

August 2019 South African Simmentaler GROUP BREEDPLAN										Simmentaler SA - <a href="http://www.simmentaler.org">www.simmentaler.org</a> / <a href="mailto:info@simmentaler.org">info@simmentaler.org</a> / 051 446 0580/2						
2019	CED	CEM	BW	200	400	600	MCW	MILK	SC	DC	EMA	IMF%	RBY%	SFL	SGF	TS
EBV	+2.9	+3.2	+0.8	+14	+22	+28	+34	-1	-0.6	--	--	--	--	+33	+81	+111
ACC	37%	34%	46%	61%	55%	54%	51%	43%	30%							
BREED	+0.8	+1.0	+1.4	+17	+27	+33	+34	+5	+0.3	-0.5	+0.3	+0.1	+0.2	+56	+110	+138

**Seller's remarks / Verkoper se kommentaar:**  
VERSKALF E1947 VAN RUAN. MOONTLIK DRAGTIG VAN E1457.

R

### ERICO E16210

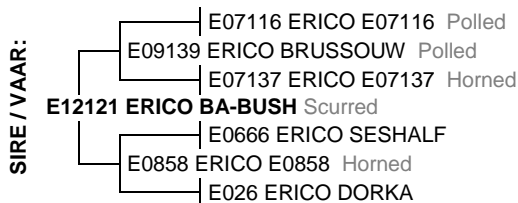
E16210

Lot. 40

EE SCHULENBURG, POSBUS 456 COLIGNY 2725 TEL:27833880518

SIMMENTALER

Birth Date: 2016/10/06      Simdex: 103      Star:      Reg. Status: REG      FEMALE/VROULIK  
Age: 35 months      Days Open: 185      Inspection Date: 2018/10/11  
Herdbook: SP      Calvings: 1      Reg. No: 102990454  
Horn: Horned      Calving dates: 19/03/10



August 2019 South African Simmentaler GROUP BREEDPLAN

Simmentaler SA - www.simmentaler.org / info@simmentaler.org / 051 446 0580/2

2019	CED	CEM	BW	200	400	600	MCW	MILK	SC	DC	EMA	IMF%	RBY%	SFL	SGF	TS
EBV	+2.3	+1.1	+1.8	+18	+27	+34	+40	+2	--	--	--	--	--	+29	+76	+130
ACC	37%	33%	54%	61%	54%	53%	49%	44%								
BREED	+0.8	+1.0	+1.4	+17	+27	+33	+34	+5	+0.3	-0.5	+0.3	+0.1	+0.2	+56	+110	+138



**Seller's remarks / Verkoper se kommentaar:**

3 IN 1. MET BULKALF E1939 VAN RUAN. 4 MAANDE DRAGTIG VAN E1457.

R \_\_\_\_\_

### VOORUITZICHT HALLEY

JH1224

Lot. 41

JH VAN BILJON, POSBUS 17 VERGELEE 8622 TEL:27833799307

SIMMENTALER

Birth Date: 2012/07/26      Simdex: 78      Star:      Reg. Status: REG      FEMALE/VROULIK  
Age: 85 months      Days Open: 154      Inspection Date: 2014/12/24  
Herdbook: SP      Calvings: 4      Reg. No: 102452727  
Horn: Horned      Calving dates: 15/05/11 16/08/26 17/09/06 19/04/10



August 2019 South African Simmentaler GROUP BREEDPLAN

Simmentaler SA - www.simmentaler.org / info@simmentaler.org / 051 446 0580/2

2019	CED	CEM	BW	200	400	600	MCW	MILK	SC	DC	EMA	IMF%	RBY%	SFL	SGF	TS
EBV	-0.8	-1.5	+1.3	+11	+17	+24	+24	+4	--	--	--	--	--	+27	+68	+82
ACC	42%	34%	73%	60%	56%	57%	56%	49%								
BREED	+0.8	+1.0	+1.4	+17	+27	+33	+34	+5	+0.3	-0.5	+0.3	+0.1	+0.2	+56	+110	+138



**Seller's remarks / Verkoper se kommentaar:**

3IN1 MET GOEIE BULKALF JH1921 VAN BOKKA Nie onder die reëls van die Genootskap

R \_\_\_\_\_

### VOORUITZICHT JESSY

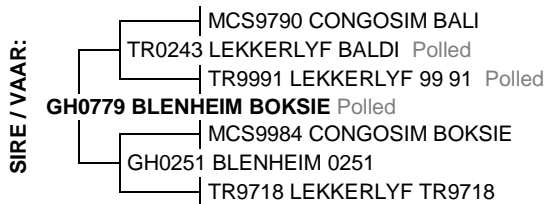
JH1050

Lot. 42

JH VAN BILJON, POSBUS 17 VERGELEE 8622 TEL:27833799307

SIMMENTALER

Birth Date: 2010/11/02      Simdex: 88      Star:      Reg. Status: REG      FEMALE/VROULIK  
Age: 106 months      Days Open: 174      Inspection Date: 2012/03/06  
Herdbook: SP      Calvings: 6      Reg. No: 102196035  
Horn: Horned      Calving dates: 12/11/05 14/07/31 15/07/21 16/11/23 17/11/07 19/03/21



August 2019 South African Simmentaler GROUP BREEDPLAN

Simmentaler SA - www.simmentaler.org / info@simmentaler.org / 051 446 0580/2

2019	CED	CEM	BW	200	400	600	MCW	MILK	SC	DC	EMA	IMF%	RBY%	SFL	SGF	TS
EBV	-1.2	-4.5	+1.5	+10	+20	+17	+22	-1	-0.1	--	--	--	--	+17	+39	+85
ACC	47%	39%	78%	68%	65%	66%	65%	60%	29%							
BREED	+0.8	+1.0	+1.4	+17	+27	+33	+34	+5	+0.3	-0.5	+0.3	+0.1	+0.2	+56	+110	+138



**Seller's remarks / Verkoper se kommentaar:**

3IN1 MET GOEIE BULKALF JH1915 VAN BOKKA

R \_\_\_\_\_

**ERICO E16192**

**E16192**

**Lot. 43**

EE SCHULENBURG, POSBUS 456 COLIGNY 2725 TEL:27833880518

**SIMMENTALER**

Birth Date: 2016/09/14      **Simdex:** 101      **Star:**      **Reg. Status:** REG      **FEMALE/VROULIK**  
 Age: 35 months      **Days Open:** 190      **Inspection Date:** 2018/10/11  
**Herdbook:** SP      **Calvings:** 1      **Reg. No:** 102989613  
**Horn:** Horned      **Calving dates:** 19/03/05



August 2019 South African Simmentaler GROUP BREEDPLAN

Simmentaler SA - [www.simmentaler.org](http://www.simmentaler.org) / [info@simmentaler.org](mailto:info@simmentaler.org) / 051 446 0580/2

2019	CED	CEM	BW	200	400	600	MCW	MILK	SC	DC	EMA	IMF%	RBY%	SFL	SGF	TS
EBV	+4.1	+3.2	+1.5	+19	+27	+34	+41	+1	--	--	--	--	--	+32	+73	+140
ACC	34%	30%	43%	58%	52%	51%	47%	39%								
BREED	+0.8	+1.0	+1.4	+17	+27	+33	+34	+5	+0.3	-0.5	+0.3	+0.1	+0.2	+56	+110	+138



**Seller's remarks / Verkoper se kommentaar:**

3 IN 1. MET VERSKALF E1913 VAN RUAN. 5 MAANDE DRAGTIG VAN E1457.

**R** \_\_\_\_\_

**ERICO E1457**

**E1457**

**Lot. 44**

EE SCHULENBURG, POSBUS 456 COLIGNY 2725 TEL:27833880518

**SIMMENTALER**

Birth Date: 2014/05/29      **DNA:** 340246 u, SV      **Reg. Status:** REG      **MALE/MANLIK**  
 Age: 63 months      **Inspection Date:** 2016/10/13  
**Herdbook:** SP      **Reg. No:** 102699220  
**Horn:** Horned



August 2019 South African Simmentaler GROUP BREEDPLAN

Simmentaler SA - [www.simmentaler.org](http://www.simmentaler.org) / [info@simmentaler.org](mailto:info@simmentaler.org) / 051 446 0580/2

2019	CED	CEM	BW	200	400	600	MCW	MILK	SC	DC	EMA	IMF%	RBY%	SFL	SGF	TS
EBV	+1.2	+0.7	+2.1	+21	+27	+35	+35	+2	+0.1	--	--	--	--	+46	+101	+129
ACC	47%	39%	57%	77%	68%	67%	62%	44%	25%							
BREED	+0.8	+1.0	+1.4	+17	+27	+33	+34	+5	+0.3	-0.5	+0.3	+0.1	+0.2	+56	+110	+138



**Seller's remarks / Verkoper se kommentaar:**

BEPROEFDE STOETBUL

**R** \_\_\_\_\_

**VOORUITZICHT FANNY**

**JH1591**

**Lot. 45**

JH VAN BILJON, POSBUS 17 VERGELEE 8622 TEL:27833799307

**SIMMENTALER**

Birth Date: 2015/10/08      **Simdex:** 98      **Star:**      **Reg. Status:** REG      **FEMALE/VROULIK**  
 Age: 47 months      **Days Open:** 131      **Inspection Date:** 2017/04/17  
**Herdbook:** SP      **Calvings:** 2      **Reg. No:** 102885928  
**Horn:** Horned      **Calving dates:** 17/10/16 19/05/03



August 2019 South African Simmentaler GROUP BREEDPLAN

Simmentaler SA - [www.simmentaler.org](http://www.simmentaler.org) / [info@simmentaler.org](mailto:info@simmentaler.org) / 051 446 0580/2

2019	CED	CEM	BW	200	400	600	MCW	MILK	SC	DC	EMA	IMF%	RBY%	SFL	SGF	TS
EBV	-3.6	-0.7	+1.7	+10	+14	+22	+25	+0	--	--	--	--	--	+7	+51	+53
ACC	39%	31%	72%	53%	49%	51%	51%	46%								
BREED	+0.8	+1.0	+1.4	+17	+27	+33	+34	+5	+0.3	-0.5	+0.3	+0.1	+0.2	+56	+110	+138



**Seller's remarks / Verkoper se kommentaar:**

MET BULKALF

**R** \_\_\_\_\_

<b>ERICO E1753</b>	<b>E1753</b>	<b>Lot. 46</b>																																																																				
EE SCHULENBURG, POSBUS 456 COLIGNY 2725 TEL:27833880518		SIMMENTALER																																																																				
Birth Date: 2017/04/02	Simdex:                      Star:	FEMALE/VROULIK																																																																				
Age: 29 months	Days Open:	Reg. No: 103057394																																																																				
Herdbook: SP	Calvings:																																																																					
Horn: Polled	Calving dates:																																																																					
<p>Inspection Date: 2018/10/11</p>																																																																						
<p><b>SIRE / VAAR:</b></p> <pre> E1334 ERICO DERKLOU Polled ├── E10204 ERICO ROCLA Polled │   ├── E07116 ERICO E07116 Polled │   └── E0714 ERICO E0714 Polled ├── E9751 ERICO HAMBAL └── E9973 ERICO DERBAL ***     └── E9213 ERICO 92 13                 </pre>	<p><b>DAM / MOER:</b></p> <pre> E13231 ERICO E13231 Polled ├── E09139 ERICO BRUSSOUW Polled │   ├── E07116 ERICO E07116 Polled │   └── E07137 ERICO E07137 Horned ├── Simdex: 74 Calving dates: 17/04/02 18/03/15 │   └── ICP: 347 └── E0965 ERICO E0965 Polled     └── E07146 ERICO BRILLIANT Horned         └── E0617 ERICO NELS                 </pre>																																																																					
<p>August 2019 South African Simmentaler GROUP BREEDPLAN <span style="float: right;">Simmentaler SA - www.simmentaler.org / info@simmentaler.org / 051 446 0580/2</span></p> <table border="1" style="width:100%; border-collapse: collapse; font-size: small;"> <thead> <tr> <th>2019</th><th>CED</th><th>CEM</th><th>BW</th><th>200</th><th>400</th><th>600</th><th>MCW</th><th>MILK</th><th>SC</th><th>DC</th><th>EMA</th><th>IMF%</th><th>RBY%</th><th>SFL</th><th>SGF</th><th>TS</th></tr> </thead> <tbody> <tr> <td>EBV</td><td>+3.0</td><td>-6.1</td><td>+1.0</td><td>+16</td><td>+22</td><td>+28</td><td>+32</td><td>+1</td><td>-0.6</td><td>--</td><td>--</td><td>--</td><td>--</td><td>+21</td><td>+67</td><td>+108</td></tr> <tr> <td>ACC</td><td>40%</td><td>37%</td><td>46%</td><td>64%</td><td>57%</td><td>56%</td><td>52%</td><td>40%</td><td>29%</td><td></td><td></td><td></td><td></td><td></td><td></td><td></td></tr> <tr> <td>BREED</td><td>+0.8</td><td>+1.0</td><td>+1.4</td><td>+17</td><td>+27</td><td>+33</td><td>+34</td><td>+5</td><td>+0.3</td><td>-0.5</td><td>+0.3</td><td>+0.1</td><td>+0.2</td><td>+56</td><td>+110</td><td>+138</td></tr> </tbody> </table>			2019	CED	CEM	BW	200	400	600	MCW	MILK	SC	DC	EMA	IMF%	RBY%	SFL	SGF	TS	EBV	+3.0	-6.1	+1.0	+16	+22	+28	+32	+1	-0.6	--	--	--	--	+21	+67	+108	ACC	40%	37%	46%	64%	57%	56%	52%	40%	29%								BREED	+0.8	+1.0	+1.4	+17	+27	+33	+34	+5	+0.3	-0.5	+0.3	+0.1	+0.2	+56	+110	+138
2019	CED	CEM	BW	200	400	600	MCW	MILK	SC	DC	EMA	IMF%	RBY%	SFL	SGF	TS																																																						
EBV	+3.0	-6.1	+1.0	+16	+22	+28	+32	+1	-0.6	--	--	--	--	+21	+67	+108																																																						
ACC	40%	37%	46%	64%	57%	56%	52%	40%	29%																																																													
BREED	+0.8	+1.0	+1.4	+17	+27	+33	+34	+5	+0.3	-0.5	+0.3	+0.1	+0.2	+56	+110	+138																																																						
<p><b>Seller's remarks / Verkoper se kommentaar:</b> POENA VERS. 3 MAANDE DRAGTIG VAN E1457.</p>																																																																						
		R _____																																																																				

<b>ERICO E16196</b>	<b>E16196</b>	<b>Lot. 47</b>																																																																				
EE SCHULENBURG, POSBUS 456 COLIGNY 2725 TEL:27833880518		SIMMENTALER																																																																				
Birth Date: 2016/09/16	Simdex: 101                      Star:	FEMALE/VROULIK																																																																				
Age: 35 months	Days Open: 186	Reg. No: 102989639																																																																				
Herdbook: SP	Calvings: 1																																																																					
Horn: Horned	Calving dates: 19/03/09																																																																					
<p>Inspection Date: 2018/10/11</p>																																																																						
<p><b>SIRE / VAAR:</b></p> <pre> E11154 ERICO E11154 Horned ├── E04105 ERICO NAPOLEON │   ├── E08150 ERICO NAPRA Horned │   └── AK006 TOVERBERG RAGEL ├── UG069 SALERIKA MALLICK (P) Polled └── E0943 ERICO E0943 Horned     └── UG01123 SALERIKA AVERIEN 3DE                 </pre>	<p><b>DAM / MOER:</b></p> <pre> E138 ERICO E138 Horned ├── NJC0532 MARLENCA DAMER (P) Polled │   ├── UG07107 SALERIKA UG07107 B Disbudded │   └── UG0466 SALERIKA UG0466 Disbudded ├── Simdex: 100 Calving dates: 15/08/19 16/09/16 17/09/16 │   └── ICP: 380 └── CE0651 SIMLEE SAMBA     ├── E09166 ERICO E09166 Horned     └── E0422 ERICO ZEAMAN *                 </pre>																																																																					
<p>August 2019 South African Simmentaler GROUP BREEDPLAN <span style="float: right;">Simmentaler SA - www.simmentaler.org / info@simmentaler.org / 051 446 0580/2</span></p> <table border="1" style="width:100%; border-collapse: collapse; font-size: small;"> <thead> <tr> <th>2019</th><th>CED</th><th>CEM</th><th>BW</th><th>200</th><th>400</th><th>600</th><th>MCW</th><th>MILK</th><th>SC</th><th>DC</th><th>EMA</th><th>IMF%</th><th>RBY%</th><th>SFL</th><th>SGF</th><th>TS</th></tr> </thead> <tbody> <tr> <td>EBV</td><td>+4.4</td><td>+3.9</td><td>+0.9</td><td>+12</td><td>+19</td><td>+23</td><td>+25</td><td>-1</td><td>--</td><td>--</td><td>--</td><td>--</td><td>--</td><td>+35</td><td>+58</td><td>+106</td></tr> <tr> <td>ACC</td><td>33%</td><td>30%</td><td>43%</td><td>60%</td><td>53%</td><td>52%</td><td>48%</td><td>39%</td><td></td><td></td><td></td><td></td><td></td><td></td><td></td><td></td></tr> <tr> <td>BREED</td><td>+0.8</td><td>+1.0</td><td>+1.4</td><td>+17</td><td>+27</td><td>+33</td><td>+34</td><td>+5</td><td>+0.3</td><td>-0.5</td><td>+0.3</td><td>+0.1</td><td>+0.2</td><td>+56</td><td>+110</td><td>+138</td></tr> </tbody> </table>			2019	CED	CEM	BW	200	400	600	MCW	MILK	SC	DC	EMA	IMF%	RBY%	SFL	SGF	TS	EBV	+4.4	+3.9	+0.9	+12	+19	+23	+25	-1	--	--	--	--	--	+35	+58	+106	ACC	33%	30%	43%	60%	53%	52%	48%	39%									BREED	+0.8	+1.0	+1.4	+17	+27	+33	+34	+5	+0.3	-0.5	+0.3	+0.1	+0.2	+56	+110	+138
2019	CED	CEM	BW	200	400	600	MCW	MILK	SC	DC	EMA	IMF%	RBY%	SFL	SGF	TS																																																						
EBV	+4.4	+3.9	+0.9	+12	+19	+23	+25	-1	--	--	--	--	--	+35	+58	+106																																																						
ACC	33%	30%	43%	60%	53%	52%	48%	39%																																																														
BREED	+0.8	+1.0	+1.4	+17	+27	+33	+34	+5	+0.3	-0.5	+0.3	+0.1	+0.2	+56	+110	+138																																																						
<p><b>Seller's remarks / Verkoper se kommentaar:</b> BULKALF E1930 VAN RUAN. MOONTLIK DRAGTIG VAN E1457.</p>																																																																						
		R _____																																																																				

<b>SALERIKA UG1480 S</b>	<b>UG1480</b>	<b>Lot. 48</b>																																																																				
JH VAN BILJON, POSBUS 17 VERGELEE 8622 TEL:27833799307		SIMMENTALER																																																																				
Birth Date: 2014/05/05	Simdex: 89                      Star:	FEMALE/VROULIK																																																																				
Age: 64 months	Days Open: 129	Reg. No: 102686011																																																																				
Herdbook: SP	Calvings: 3																																																																					
Horn:	Calving dates: 16/12/31 17/10/23 19/05/05																																																																					
<p>Inspection Date: 2016/07/25</p>																																																																						
<p><b>SIRE / VAAR:</b></p> <pre> UG11156 SALERIKA UG11156 A Disbudded ├── CE0693 SIMLEE HAMAN │   ├── UG0960 SALERIKA ORION 2DE Scurred │   └── UG01171 SALERIKA OLGA *** Polled ├── UG05129 SALERIKA HELDERBERG Polled └── UG08226 SALERIKA ANN Horned     └── UG05150 SALERIKA UG05150 A Disbudded                 </pre>	<p><b>DAM / MOER:</b></p> <pre> UG1020 SALERIKA UG10020 S Disbudded ├── CA193266 HARKAWAY ENFORCER 16Y (P) PP │   ├── PN97174 LEEUPOORT DAN VAN ZYL Polled │   └── 5265 LUZI ├── Simdex: 106 Calving dates: 12/03/30 13/04/07 14/05/05 15/05/24 16/05/13 │   └── ICP: 377 └── UG03160 SALERIKA JANO 8STE     ├── UG0847 SALERIKA UG08047 S Disbudded     └── UG04179 SALERIKA 04179 S Disbudded                 </pre>																																																																					
<p>August 2019 South African Simmentaler GROUP BREEDPLAN <span style="float: right;">Simmentaler SA - www.simmentaler.org / info@simmentaler.org / 051 446 0580/2</span></p> <table border="1" style="width:100%; border-collapse: collapse; font-size: small;"> <thead> <tr> <th>2019</th><th>CED</th><th>CEM</th><th>BW</th><th>200</th><th>400</th><th>600</th><th>MCW</th><th>MILK</th><th>SC</th><th>DC</th><th>EMA</th><th>IMF%</th><th>RBY%</th><th>SFL</th><th>SGF</th><th>TS</th></tr> </thead> <tbody> <tr> <td>EBV</td><td>+6.5</td><td>+4.3</td><td>+0.1</td><td>+19</td><td>+31</td><td>+35</td><td>+27</td><td>+5</td><td>+0.6</td><td>-1.7</td><td>-0.2</td><td>--</td><td>+0.2</td><td>+103</td><td>+154</td><td>+179</td></tr> <tr> <td>ACC</td><td>39%</td><td>31%</td><td>73%</td><td>57%</td><td>55%</td><td>57%</td><td>56%</td><td>49%</td><td>27%</td><td>30%</td><td>28%</td><td></td><td>36%</td><td></td><td></td><td></td></tr> <tr> <td>BREED</td><td>+0.8</td><td>+1.0</td><td>+1.4</td><td>+17</td><td>+27</td><td>+33</td><td>+34</td><td>+5</td><td>+0.3</td><td>-0.5</td><td>+0.3</td><td>+0.1</td><td>+0.2</td><td>+56</td><td>+110</td><td>+138</td></tr> </tbody> </table>			2019	CED	CEM	BW	200	400	600	MCW	MILK	SC	DC	EMA	IMF%	RBY%	SFL	SGF	TS	EBV	+6.5	+4.3	+0.1	+19	+31	+35	+27	+5	+0.6	-1.7	-0.2	--	+0.2	+103	+154	+179	ACC	39%	31%	73%	57%	55%	57%	56%	49%	27%	30%	28%		36%				BREED	+0.8	+1.0	+1.4	+17	+27	+33	+34	+5	+0.3	-0.5	+0.3	+0.1	+0.2	+56	+110	+138
2019	CED	CEM	BW	200	400	600	MCW	MILK	SC	DC	EMA	IMF%	RBY%	SFL	SGF	TS																																																						
EBV	+6.5	+4.3	+0.1	+19	+31	+35	+27	+5	+0.6	-1.7	-0.2	--	+0.2	+103	+154	+179																																																						
ACC	39%	31%	73%	57%	55%	57%	56%	49%	27%	30%	28%		36%																																																									
BREED	+0.8	+1.0	+1.4	+17	+27	+33	+34	+5	+0.3	-0.5	+0.3	+0.1	+0.2	+56	+110	+138																																																						
<p><b>Seller's remarks / Verkoper se kommentaar:</b> 3IN1 MET VERSKALF JH1926 VAN BOKKA</p>																																																																						
		R _____																																																																				



<b>ERICO E16169</b>										<b>E16169</b>					<b>Lot. 49</b>	
EE SCHULENBURG, POSBUS 456 COLIGNY 2725 TEL:27833880518										SIMMENTALER						
Birth Date: 2016/09/10		Simdex: 99		Star:		Reg. Status: REG			FEMALE/VROULIK							
Age: 36 months		Days Open: 174		Inspection Date: 2018/10/11			Reg. No: 102990355									
Herdbook: SP		Calvings: 1														
Horn: Polled		Calving dates: 19/03/21														

<p><b>SIRE / VAAR:</b></p> <ul style="list-style-type: none"> <li>— E07116 ERICO E07116 Polled</li> <li>— E10204 ERICO ROCLA Polled</li> <li>— E0714 ERICO E0714 Polled</li> <li>— <b>E1334 ERICO DERKLOU Polled</b></li> <li>— E9751 ERICO HAMBAL</li> <li>— E9973 ERICO DERBAL ***</li> <li>— E9213 ERICO 92 13</li> </ul>	<p><b>DAM / MOER:</b></p> <ul style="list-style-type: none"> <li>— CMO0273 RU-DEV STAAL</li> <li>— ACM0932 MILAGRO IBIS 0932 Horned</li> <li>— JJM0550 JASTLEM LUME - 4E</li> <li>— <b>E1320 ERICO E1320 Horned</b></li> <li>— Simdex: 100 Calving dates: 15/07/17 16/09/10</li> <li>— ICP: 421</li> <li>— E9716 ERICO EFEKTO</li> <li>— E0017 ERICO ZETFEK *</li> <li>— E9656 ERICO ZET **</li> </ul>
--	--

August 2019 South African Simmentaler GROUP BREEDPLAN										Simmentaler SA - www.simmentaler.org / info@simmentaler.org / 051 446 0580/2						
2019	CED	CEM	BW	200	400	600	MCW	MILK	SC	DC	EMA	IMF%	RBY%	SFL	SGF	TS
EBV	+1.7	-4.5	+0.6	+14	+17	+21	+22	+4	--	--	--	--	--	+32	+71	+89
ACC	36%	32%	42%	62%	55%	54%	50%	37%								
BREED	+0.8	+1.0	+1.4	+17	+27	+33	+34	+5	+0.3	-0.5	+0.3	+0.1	+0.2	+56	+110	+138

**Seller's remarks / Verkoper se kommentaar:**  
POENA KOEI. 4 MAANDE DRAGTIG VAN E1457.

R \_\_\_\_\_

<b>ERICO E12148</b>										<b>E12148</b>					<b>Lot. 50</b>	
EE SCHULENBURG, POSBUS 456 COLIGNY 2725 TEL:27833880518										SIMMENTALER						
Birth Date: 2012/08/28		Simdex: 107		Star:		Reg. Status: REG			FEMALE/VROULIK							
Age: 84 months		Days Open: 368		Inspection Date: 2014/10/20			Reg. No: 102447537									
Herdbook: SP		Calvings: 5														
Horn: Horned		Calving dates: 14/11/01 15/10/22 16/09/20 17/08/26 18/09/08														

<p><b>SIRE / VAAR:</b></p> <ul style="list-style-type: none"> <li>— KM0363 KWANTUM DOORSIE</li> <li>— KM0676 KWANTUM DO MAR Horned</li> <li>— KM0126 KWANTUM MARLY **</li> <li>— <b>E1031 ERICO E1031 Horned</b></li> <li>— CMO0098 RU-DEV GARIES</li> <li>— E0431 ERICO SINRIES</li> <li>— E9897 ERICO SINPED</li> </ul>	<p><b>DAM / MOER:</b></p> <ul style="list-style-type: none"> <li>— WDW023 LOCHEIM MIDAS Polled</li> <li>— WDW0511 LOCHEIM JUMBO Polled</li> <li>— WDW0327 LOCHEIM ENA</li> <li>— <b>E10145 ERICO E10145 ** Horned</b></li> <li>— Simdex: 100 Calving dates: 12/08/28 13/09/13 14/08/28 15/09/21 16/08/23</li> <li>— ICP: 396 17/07/21 19/03/01</li> <li>— JH0361 VOORUITZICHT DINAT</li> <li>— JH0646 VOORUITZICHT CON Horned</li> <li>— JH9920 VOORUITZICHT CONNIE II * Polled</li> </ul>
---	--

August 2019 South African Simmentaler GROUP BREEDPLAN										Simmentaler SA - www.simmentaler.org / info@simmentaler.org / 051 446 0580/2						
2019	CED	CEM	BW	200	400	600	MCW	MILK	SC	DC	EMA	IMF%	RBY%	SFL	SGF	TS
EBV	-0.6	+1.7	+1.4	+17	+25	+35	+39	+8	--	--	--	--	--	+32	+87	+118
ACC	37%	33%	41%	55%	50%	48%	45%	56%								
BREED	+0.8	+1.0	+1.4	+17	+27	+33	+34	+5	+0.3	-0.5	+0.3	+0.1	+0.2	+56	+110	+138

**Seller's remarks / Verkoper se kommentaar:**  
8.5 MAANDE DRAGTIG VAN E15133.

R \_\_\_\_\_

<b>VOORUITZICHT MARIE</b>										<b>JH1714</b>					<b>Lot. 51</b>	
JH VAN BILJON, POSBUS 17 VERGELEE 8622 TEL:27833799307										SIMMENTALER						
Birth Date: 2017/01/23		Simdex:		Star:		Reg. Status: REG			FEMALE/VROULIK							
Age: 31 months		Days Open:		Inspection Date: 2018/09/04			Reg. No: 103035903									
Herdbook: SP		Calvings:														
Horn: Horned		Calving dates:														

<p><b>SIRE / VAAR:</b></p> <ul style="list-style-type: none"> <li>— PN07147 LEEUPOORT BRITS Horned</li> <li>— PN09183 LEEUPOORT VAN ZYL Horned</li> <li>— CE9920 SIMLEE MARIANA ***</li> <li>— <b>JH1251 VOORUITZICHT LEEU Horned</b></li> <li>— RAP0014 RAPOLE STAMPER</li> <li>— JH04275 VOORUITZICHT LISNA</li> <li>— JH9810 VOORUITZICHT LISA</li> </ul>	<p><b>DAM / MOER:</b></p> <ul style="list-style-type: none"> <li>— MS98133 KYKSO HAPAN</li> <li>— KWA0315 KWAITIZI JOON</li> <li>— KWA0039 KWAITIZI JOAN **</li> <li>— <b>KWA0722 KWAITIZI ERNA Horned</b></li> <li>— Simdex: 89 Calving dates: 09/11/09 10/11/06 11/11/10 12/10/16 13/11/16</li> <li>— ICP: 425 15/05/08 17/01/23 17/12/31</li> <li>— MS98133 KYKSO HAPAN</li> <li>— KWA049 KWAITIZI ESTA</li> <li>— KWA0052 KWAITIZI ELSA **</li> </ul>
--	---

August 2019 South African Simmentaler GROUP BREEDPLAN										Simmentaler SA - www.simmentaler.org / info@simmentaler.org / 051 446 0580/2						
2019	CED	CEM	BW	200	400	600	MCW	MILK	SC	DC	EMA	IMF%	RBY%	SFL	SGF	TS
EBV	-5.7	-2.3	+2.0	+18	+26	+35	+46	+6	--	--	--	--	--	+12	+87	+101
ACC	36%	28%	70%	54%	51%	52%	52%	38%								
BREED	+0.8	+1.0	+1.4	+17	+27	+33	+34	+5	+0.3	-0.5	+0.3	+0.1	+0.2	+56	+110	+138

**Seller's remarks / Verkoper se kommentaar:**  
5MND E DRAGTIG VAN MMA1626

R \_\_\_\_\_

## ERICO E16231

E16231

Lot. 52

EE SCHULENBURG, POSBUS 456 COLIGNY 2725 TEL:27833880518

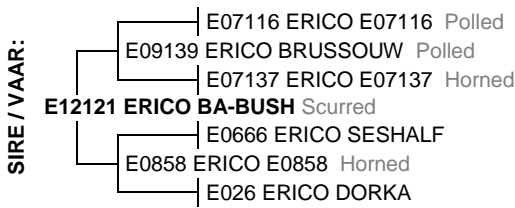
SIMMENTALER

Birth Date: 2016/10/31 DNA: 477043 u, SV  
 Age: 34 months  
 Herdbook: SP  
 Horn: Polled

Reg. Status: REG  
 Inspection Date: 2018/10/11

MALE/MANLIK

Reg. No: 102990587



August 2019 South African Simmentaler GROUP BREEDPLAN

Simmentaler SA - www.simmentaler.org / info@simmentaler.org / 051 446 0580/2

2019	CED	CEM	BW	200	400	600	MCW	MILK	SC	DC	EMA	IMF%	RBY%	SFL	SGF	TS
EBV	+3.5	+1.4	+1.5	+14	+20	+27	+31	-2	--	--	--	--	--	+24	+60	+104
ACC	38%	35%	51%	61%	55%	53%	50%	43%								
BREED	+0.8	+1.0	+1.4	+17	+27	+33	+34	+5	+0.3	-0.5	+0.3	+0.1	+0.2	+56	+110	+138



Seller's remarks / Verkoper se kommentaar:

R \_\_\_\_\_

## ERICO E16160

E16160

Lot. 53

EE SCHULENBURG, POSBUS 456 COLIGNY 2725 TEL:27833880518

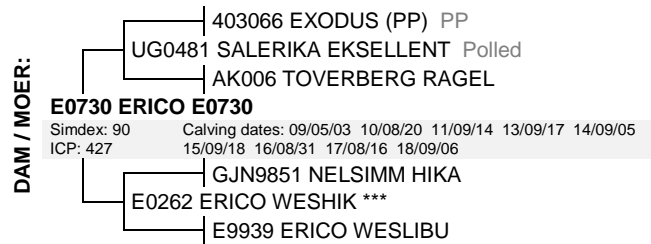
SIMMENTALER

Birth Date: 2016/08/31 DNA: 477034 u, SV  
 Age: 36 months  
 Herdbook: SP  
 Horn: Horned

Reg. Status: REG  
 Inspection Date: 2018/10/11

MALE/MANLIK

Reg. No: 102989431



August 2019 South African Simmentaler GROUP BREEDPLAN

Simmentaler SA - www.simmentaler.org / info@simmentaler.org / 051 446 0580/2

2019	CED	CEM	BW	200	400	600	MCW	MILK	SC	DC	EMA	IMF%	RBY%	SFL	SGF	TS
EBV	-1.5	-4.7	+2.2	+16	+22	+28	+37	+2	-0.4	--	--	--	--	-5	+33	+90
ACC	38%	36%	45%	60%	54%	53%	50%	44%	30%							
BREED	+0.8	+1.0	+1.4	+17	+27	+33	+34	+5	+0.3	-0.5	+0.3	+0.1	+0.2	+56	+110	+138



Seller's remarks / Verkoper se kommentaar:

R \_\_\_\_\_

## VOORUITZICHT DOLLIE 1728

JH1728

Lot. 54

JH VAN BILJON, POSBUS 17 VERGELEE 8622 TEL:27833799307

SIMMENTALER

Birth Date: 2017/09/05  
 Age: 24 months  
 Herdbook: SP  
 Horn: Horned

Simdex:  
 Days Open:  
 Calvings:  
 Calving dates:

Star:

Reg. Status: REG  
 Inspection Date: 2019/09/03

FEMALE/VROULIK

Reg. No: 103095071



August 2019 South African Simmentaler GROUP BREEDPLAN

Simmentaler SA - www.simmentaler.org / info@simmentaler.org / 051 446 0580/2

2019	CED	CEM	BW	200	400	600	MCW	MILK	SC	DC	EMA	IMF%	RBY%	SFL	SGF	TS
EBV	+0.2	+1.1	+1.8	+23	+37	+45	+44	+6	--	--	--	--	--	+68	+135	+175
ACC	37%	30%	70%	61%	56%	56%	54%	39%								
BREED	+0.8	+1.0	+1.4	+17	+27	+33	+34	+5	+0.3	-0.5	+0.3	+0.1	+0.2	+56	+110	+138



Seller's remarks / Verkoper se kommentaar:

5MND E DRAGTIG VAN MMA1626

R \_\_\_\_\_

<b>ERICO E1742</b>										<b>E1742</b>					<b>Lot. 55</b>		
EE SCHULENBURG, POSBUS 456 COLIGNY 2725 TEL:27833880518										SIMMENTALER							
Birth Date: 2017/03/22			DNA: 477041 u, SV			Reg. Status: REG			MALE/MANLIK								
Age: 29 months						Inspection Date: 2018/10/11			Reg. No: 103057287								
Herdbook: SP																	
Horn: Horned																	
SIRE / VAAR:	E07116 ERICO E07116 Polled E09139 ERICO BRUSSOUW Polled E07137 ERICO E07137 Horned <b>JV1320 ALVOS PETRIE</b> PJO0859 TAAIBOSSPRUIT PRETORIA Horned JV1040 ALVOS PETRO Horned PJO085 TAAIBOSSPRUIT GRIET 2 Horned					DAM / MOER:	UG06191 SALERIKA SALBERG Polled E1159 ERICO E1159 Horned JPD0839 DE VIL DATA Horned <b>E13128 ERICO E13128</b> Horned Simdex: 88 Calving dates: 16/03/05 17/03/22 18/09/20 ICP: 465 UG07107 SALERIKA UG07107 B Disbudded E10191 ERICO E10191 Horned E0552 ERICO LAGAR ***										
August 2019 South African Simmentaler GROUP BREEDPLAN										Simmentaler SA - www.simmentaler.org / info@simmentaler.org / 051 446 0580/2							
2019	CED	CEM	BW	200	400	600	MCW	MILK	SC	DC	EMA	IMF%	RBY%	SFL	SGF	TS	
EBV	+3.6	-2.1	+1.4	+18	+28	+36	+39	+3	--	--	--	--	--	+45	+98	+148	
ACC	31%	29%	39%	58%	52%	51%	47%	37%									
BREED	+0.8	+1.0	+1.4	+17	+27	+33	+34	+5	+0.3	-0.5	+0.3	+0.1	+0.2	+56	+110	+138	
<b>Seller's remarks / Verkoper se kommentaar:</b>										<b>R</b>							

<b>ERICO E1782</b>										<b>E1782</b>					<b>Lot. 56</b>		
EE SCHULENBURG, POSBUS 456 COLIGNY 2725 TEL:27833880518										SIMMENTALER							
Birth Date: 2017/02/20			DNA: 477045 u, SV			Reg. Status: REG			MALE/MANLIK								
Age: 30 months						Inspection Date: 2018/10/11			Reg. No: 103056909								
Herdbook: SP																	
Horn: Horned																	
SIRE / VAAR:	PN07507 LEEUPOORT WILKO Horned PN09614 LEEUPOORT ARAMIS Horned 0680 LUISE <b>PN11740 LEEUPOORT ARTHOS</b> Horned PN98112 LEEUPOORT REBKE PN0275 LEEUPOORT ASIMA ** PN9973 LEEUPOORT ALEGEN					DAM / MOER:	MS9820 KYKSO MIJU WEH0320 DORSIM MIAM WC9497 WISP-WILL AMOR 4 *** <b>LJ089 NOORDVAAL ASJAMI</b> Horned Simdex: 88 Calving dates: 10/11/21 11/10/13 12/09/12 13/09/11 14/10/16 ICP: 410 15/12/25 17/02/20 18/09/29 GH0198 BLENHEIM PRINGO 2 EC0522 VON HAMMAN ASJAS EC0216 VON HAMMAN ASTEL										
August 2019 South African Simmentaler GROUP BREEDPLAN										Simmentaler SA - www.simmentaler.org / info@simmentaler.org / 051 446 0580/2							
2019	CED	CEM	BW	200	400	600	MCW	MILK	SC	DC	EMA	IMF%	RBY%	SFL	SGF	TS	
EBV	-5.5	+2.4	+1.7	+16	+27	+33	+31	+7	+0.5	--	--	--	--	+41	+96	+103	
ACC	38%	31%	54%	60%	55%	54%	50%	40%	32%								
BREED	+0.8	+1.0	+1.4	+17	+27	+33	+34	+5	+0.3	-0.5	+0.3	+0.1	+0.2	+56	+110	+138	
<b>Seller's remarks / Verkoper se kommentaar:</b>										<b>R</b>							

<b>ERICO E16159 (TW)</b>										<b>E16159</b>					<b>Lot. 57</b>		
EE SCHULENBURG, POSBUS 456 COLIGNY 2725 TEL:27833880518										SIMMENTALER							
Birth Date: 2016/08/30			DNA: 477044 u, SV			Reg. Status: REG			MALE/MANLIK								
Age: 36 months						Inspection Date: 2018/10/11			Sex of Twin: Female								
Herdbook: SP									Reg. No: 102989415								
Horn: Horned																	
SIRE / VAAR:	E04105 ERICO NAPOLEON E08150 ERICO NAPRA Horned AK006 TOVERBERG RAGEL <b>E11154 ERICO E11154</b> Horned UG069 SALERIKA MALLICK (P) Polled E0943 ERICO E0943 Horned UG01123 SALERIKA AVERIEN 3DE					DAM / MOER:	E04105 ERICO NAPOLEON E07116 ERICO E07116 Polled E0270 ERICO GRET Polled <b>E1119 ERICO E1119</b> Horned Simdex: 65 Calving dates: 13/08/30 16/08/30 17/09/11 18/09/14 ICP: 614 PJO0138 TAAIBOSSPRUIT PROMAN E0513 ERICO WERPRO E0175 ERICO BLESHEL										
August 2019 South African Simmentaler GROUP BREEDPLAN										Simmentaler SA - www.simmentaler.org / info@simmentaler.org / 051 446 0580/2							
2019	CED	CEM	BW	200	400	600	MCW	MILK	SC	DC	EMA	IMF%	RBY%	SFL	SGF	TS	
EBV	+4.5	+1.1	+0.6	+12	+17	+23	+27	-1	-0.6	--	--	--	--	+21	+53	+92	
ACC	36%	33%	44%	57%	52%	51%	48%	40%	26%								
BREED	+0.8	+1.0	+1.4	+17	+27	+33	+34	+5	+0.3	-0.5	+0.3	+0.1	+0.2	+56	+110	+138	
<b>Seller's remarks / Verkoper se kommentaar:</b>										<b>R</b>							

**ERICO E1770**

**E1770**

**Lot. 58**

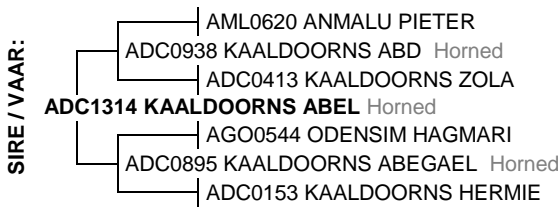
EE SCHULENBURG, POSBUS 456 COLIGNY 2725 TEL:27833880518

SIMMENTALER

Birth Date: 2017/05/01 DNA: 477057 u, SV  
Age: 28 months  
Herdbook: SP  
Horn: Horned

Reg. Status: REG  
Inspection Date: 2019/09/03

MALE/MANLIK  
Reg. No: 103057485



August 2019 South African Simmentaler GROUP BREEDPLAN

Simmentaler SA - www.simmentaler.org / info@simmentaler.org / 051 446 0580/2

2019	CED	CEM	BW	200	400	600	MCW	MILK	SC	DC	EMA	IMF%	RBY%	SFL	SGF	TS
EBV	+1.2	-0.9	+1.2	+12	+19	+24	+30	+6	+0.1	--	--	--	--	+21	+61	+94
ACC	33%	27%	55%	56%	55%	54%	51%	37%	32%							
BREED	+0.8	+1.0	+1.4	+17	+27	+33	+34	+5	+0.3	-0.5	+0.3	+0.1	+0.2	+56	+110	+138



**Seller's remarks / Verkoper se kommentaar:**

R \_\_\_\_\_

**ERICO E16164**

**E16164**

**Lot. 59**

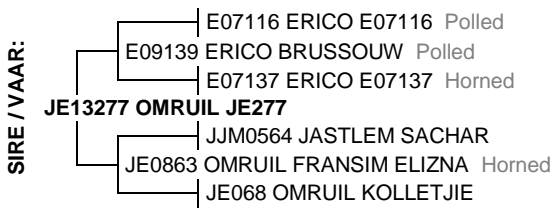
EE SCHULENBURG, POSBUS 456 COLIGNY 2725 TEL:27833880518

SIMMENTALER

Birth Date: 2016/09/06 DNA: 477038 u, SV  
Age: 36 months  
Herdbook: SP  
Horn: Horned

Reg. Status: REG  
Inspection Date: 2018/10/11

MALE/MANLIK  
Reg. No: 102989464



August 2019 South African Simmentaler GROUP BREEDPLAN

Simmentaler SA - www.simmentaler.org / info@simmentaler.org / 051 446 0580/2

2019	CED	CEM	BW	200	400	600	MCW	MILK	SC	DC	EMA	IMF%	RBY%	SFL	SGF	TS
EBV	-0.2	-5.0	+2.4	+20	+31	+39	+46	+5	-0.1	--	--	--	--	+25	+75	+147
ACC	35%	33%	42%	59%	53%	51%	48%	39%	26%							
BREED	+0.8	+1.0	+1.4	+17	+27	+33	+34	+5	+0.3	-0.5	+0.3	+0.1	+0.2	+56	+110	+138



**Seller's remarks / Verkoper se kommentaar:**

R \_\_\_\_\_

**ERICO E1746**

**E1746**

**Lot. 60**

EE SCHULENBURG, POSBUS 456 COLIGNY 2725 TEL:27833880518

SIMMENTALER

Birth Date: 2017/03/25 DNA: 477046 u, SV  
Age: 29 months  
Herdbook: SP  
Horn: Horned

Reg. Status: REG  
Inspection Date: 2018/10/11

MALE/MANLIK  
Reg. No: 103057337



August 2019 South African Simmentaler GROUP BREEDPLAN

Simmentaler SA - www.simmentaler.org / info@simmentaler.org / 051 446 0580/2

2019	CED	CEM	BW	200	400	600	MCW	MILK	SC	DC	EMA	IMF%	RBY%	SFL	SGF	TS
EBV	+0.4	-1.0	+1.6	+16	+28	+37	+47	+4	-0.1	--	--	--	--	+28	+95	+134
ACC	35%	32%	44%	58%	53%	52%	49%	39%	29%							
BREED	+0.8	+1.0	+1.4	+17	+27	+33	+34	+5	+0.3	-0.5	+0.3	+0.1	+0.2	+56	+110	+138



**Seller's remarks / Verkoper se kommentaar:**

R \_\_\_\_\_

**ERICO E17162**

**E17162**

**Lot. 61**

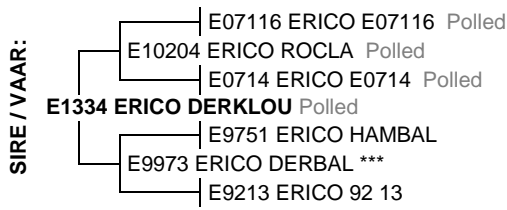
EE SCHULENBURG, POSBUS 456 COLIGNY 2725 TEL:27833880518

**SIMMENTALER**

Birth Date: 2017/08/27 DNA: 477053 u, SV  
Age: 24 months  
Herdbook: SP  
Horn: Horned

Reg. Status: REG  
Inspection Date: 2019/09/03

**MALE/MANLIK**  
Reg. No: 103094561



August 2019 South African Simmentaler GROUP BREEDPLAN

Simmentaler SA - [www.simmentaler.org](http://www.simmentaler.org) / [info@simmentaler.org](mailto:info@simmentaler.org) / 051 446 0580/2

2019	CED	CEM	BW	200	400	600	MCW	MILK	SC	DC	EMA	IMF%	RBY%	SFL	SGF	TS
EBV	+3.0	-0.3	+0.6	+13	+18	+22	+24	+4	--	--	--	--	--	+29	+64	+92
ACC	36%	33%	42%	61%	54%	53%	49%	39%								
BREED	+0.8	+1.0	+1.4	+17	+27	+33	+34	+5	+0.3	-0.5	+0.3	+0.1	+0.2	+56	+110	+138



**Seller's remarks / Verkoper se kommentaar:**

R \_\_\_\_\_

**ERICO E17121**

**E17121**

**Lot. 62**

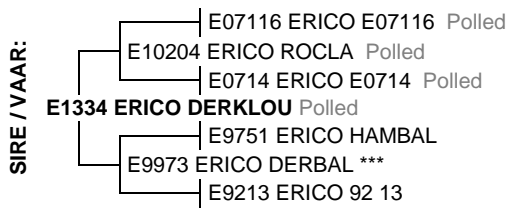
EE SCHULENBURG, POSBUS 456 COLIGNY 2725 TEL:27833880518

**SIMMENTALER**

Birth Date: 2017/08/20 DNA: 477018 u, SV  
Age: 24 months  
Herdbook: SP  
Horn: Horned

Reg. Status: REG  
Inspection Date: 2019/09/03

**MALE/MANLIK**  
Reg. No: 103093902



August 2019 South African Simmentaler GROUP BREEDPLAN

Simmentaler SA - [www.simmentaler.org](http://www.simmentaler.org) / [info@simmentaler.org](mailto:info@simmentaler.org) / 051 446 0580/2

2019	CED	CEM	BW	200	400	600	MCW	MILK	SC	DC	EMA	IMF%	RBY%	SFL	SGF	TS
EBV	+1.7	-0.3	+0.8	+14	+19	+25	+27	+2	--	--	--	--	--	+31	+77	+93
ACC	37%	34%	44%	63%	56%	54%	50%	42%								
BREED	+0.8	+1.0	+1.4	+17	+27	+33	+34	+5	+0.3	-0.5	+0.3	+0.1	+0.2	+56	+110	+138



**Seller's remarks / Verkoper se kommentaar:**

R \_\_\_\_\_

**ERICO E17174**

**E17174**

**Lot. 63**

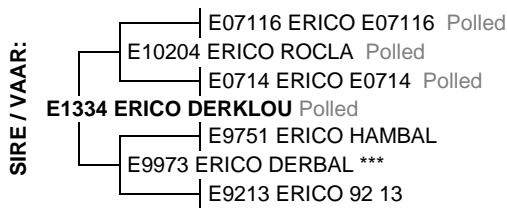
EE SCHULENBURG, POSBUS 456 COLIGNY 2725 TEL:27833880518

**SIMMENTALER**

Birth Date: 2017/09/04 DNA: 477005 u, SV  
Age: 24 months  
Herdbook: SP  
Horn: Horned

Reg. Status: REG  
Inspection Date: 2019/09/03

**MALE/MANLIK**  
Reg. No: 103094835



August 2019 South African Simmentaler GROUP BREEDPLAN

Simmentaler SA - [www.simmentaler.org](http://www.simmentaler.org) / [info@simmentaler.org](mailto:info@simmentaler.org) / 051 446 0580/2

2019	CED	CEM	BW	200	400	600	MCW	MILK	SC	DC	EMA	IMF%	RBY%	SFL	SGF	TS
EBV	+2.3	-2.3	+0.6	+14	+20	+26	+30	+4	--	--	--	--	--	+28	+78	+101
ACC	37%	34%	42%	62%	55%	54%	50%	42%								
BREED	+0.8	+1.0	+1.4	+17	+27	+33	+34	+5	+0.3	-0.5	+0.3	+0.1	+0.2	+56	+110	+138



**Seller's remarks / Verkoper se kommentaar:**

R \_\_\_\_\_

<b>ERICO E17127</b>	<b>E17127</b>	<b>Lot. 64</b>
EE SCHULENBURG, POSBUS 456 COLIGNY 2725 TEL:27833880518		SIMMENTALER
Birth Date: 2017/08/27      DNA: 477001 u, SV	Reg. Status: REG	MALE/MANLIK
Age: 24 months	Inspection Date: 2019/09/03	Reg. No: 103094520
Herdbook: SP		
Horn: Polled		

<p><b>SIRE / VAAR:</b></p> <pre>                 E07116 ERICO E07116 Polled                 E10204 ERICO ROCLA Polled                 E0714 ERICO E0714 Polled         <b>E1334 ERICO DERKLOU</b> Polled                 E9751 ERICO HAMBAL                 E9973 ERICO DERBAL ***                 E9213 ERICO 92 13           </pre>	<p><b>DAM / MOER:</b></p> <pre>                 403066 EXODUS (PP) PP                 E07146 ERICO BRILLIANT Horned                 AK006 TOVERBERG RAGEL         <b>E0963 ERICO E0963</b> Polled                 Simdex: 104      Calving dates: 11/08/27 12/08/16 13/08/28 14/09/08 15/08/27         ICP: 367      16/07/02 17/08/27 17/08/31 18/09/03                 KS0376 KYKSIM BANAT                 E06157 ERICO E06157 Horned                 E9926 ERICO PIPJAP           </pre>
---	---

August 2019 South African Simmentaler GROUP BREEDPLAN	Simmentaler SA - <a href="http://www.simmentaler.org">www.simmentaler.org</a> / <a href="mailto:info@simmentaler.org">info@simmentaler.org</a> / 051 446 0580/2
---	---

2019	CED	CEM	BW	200	400	600	MCW	MILK	SC	DC	EMA	IMF%	RBY%	SFL	SGF	TS
EBV	+1.9	-4.8	+1.0	+17	+22	+28	+30	+6	-0.3	--	--	--	--	+30	+70	+113
ACC	38%	35%	44%	64%	57%	56%	52%	44%	25%							
BREED	+0.8	+1.0	+1.4	+17	+27	+33	+34	+5	+0.3	-0.5	+0.3	+0.1	+0.2	+56	+110	+138

**Seller's remarks / Verkoper se kommentaar:**

R \_\_\_\_\_

<b>ERICO E17103</b>	<b>E17103</b>	<b>Lot. 65</b>
EE SCHULENBURG, POSBUS 456 COLIGNY 2725 TEL:27833880518		SIMMENTALER
Birth Date: 2017/08/25      DNA: 477012 u, SV	Reg. Status: REG	MALE/MANLIK
Age: 24 months	Inspection Date: 2019/09/03	Reg. No: 103093993
Herdbook: SP		
Horn: Polled		

<p><b>SIRE / VAAR:</b></p> <pre>                 E07116 ERICO E07116 Polled                 E10204 ERICO ROCLA Polled                 E0714 ERICO E0714 Polled         <b>E151 ERICO E151</b> Polled                 E0499 ERICO E0499                 E0722 ERICO E0722                 E0039 ERICO FRIENDLY           </pre>	<p><b>DAM / MOER:</b></p> <pre>                 E078 ERICO EKSELARO Polled                 E09183 ERICO 09183 Polled                 E058 ERICO HAZPRO *** Polled         <b>E1214 ERICO E1214</b> Polled                 Simdex: 98      Calving dates: 14/03/12 15/08/25 16/08/28 17/08/25 18/10/29         ICP: 423                 UG0481 SALERIKA EKSELLENT Polled                 DJA0726 ELLI'S QUITE Polled                 JH0351 VOORUITZICHT QUITTO           </pre>
--	---

August 2019 South African Simmentaler GROUP BREEDPLAN	Simmentaler SA - <a href="http://www.simmentaler.org">www.simmentaler.org</a> / <a href="mailto:info@simmentaler.org">info@simmentaler.org</a> / 051 446 0580/2
---	---

2019	CED	CEM	BW	200	400	600	MCW	MILK	SC	DC	EMA	IMF%	RBY%	SFL	SGF	TS
EBV	+0.0	-2.0	+1.1	+13	+19	+24	+27	+1	--	--	--	--	--	+23	+68	+85
ACC	33%	29%	40%	57%	50%	49%	45%	35%								
BREED	+0.8	+1.0	+1.4	+17	+27	+33	+34	+5	+0.3	-0.5	+0.3	+0.1	+0.2	+56	+110	+138

**Seller's remarks / Verkoper se kommentaar:**

R \_\_\_\_\_

<b>ERICO E1798</b>	<b>E1798</b>	<b>Lot. 66</b>
EE SCHULENBURG, POSBUS 456 COLIGNY 2725 TEL:27833880518		SIMMENTALER
Birth Date: 2017/08/23      DNA: 477009 u, SV	Reg. Status: REG	MALE/MANLIK
Age: 24 months	Inspection Date: 2019/09/03	Reg. No: 103093951
Herdbook: SP		
Horn: Horned		

<p><b>SIRE / VAAR:</b></p> <pre>                 PN07507 LEEUPOORT WILKO Horned                 PN09614 LEEUPOORT ARAMIS Horned                 0680 LUISE         <b>PN11740 LEEUPOORT ARTHOS</b> Horned                 PN98112 LEEUPOORT REBKE                 PN0275 LEEUPOORT ASIMA **                 PN9973 LEEUPOORT ALEGEN           </pre>	<p><b>DAM / MOER:</b></p> <pre>                 E04105 ERICO NAPOLEON                 E08150 ERICO NAPRA Horned                 AK006 TOVERBERG RAGEL         <b>E11173 ERICO E11173</b> Horned                 Simdex: 94      Calving dates: 13/08/21 14/09/20 16/04/01 17/08/23 18/09/03         ICP: 460                 E0723 ERICO E0723                 E09130 ERICO E09130 Horned                 E03117 ERICO HAZBARTEL           </pre>
--	---

August 2019 South African Simmentaler GROUP BREEDPLAN	Simmentaler SA - <a href="http://www.simmentaler.org">www.simmentaler.org</a> / <a href="mailto:info@simmentaler.org">info@simmentaler.org</a> / 051 446 0580/2
---	---

2019	CED	CEM	BW	200	400	600	MCW	MILK	SC	DC	EMA	IMF%	RBY%	SFL	SGF	TS
EBV	-7.1	+3.8	+1.9	+16	+22	+29	+29	+4	+0.1	--	--	--	--	+13	+57	+66
ACC	38%	32%	53%	62%	55%	54%	51%	39%	33%							
BREED	+0.8	+1.0	+1.4	+17	+27	+33	+34	+5	+0.3	-0.5	+0.3	+0.1	+0.2	+56	+110	+138

**Seller's remarks / Verkoper se kommentaar:**

R \_\_\_\_\_

